

Jackson County **voters'** **pamphlet**



Oregon Vote-by-Mail Special Election | **November 5, 2013**

Measure 15-120 Applegate Valley Rural Fire District #9

Ballot Title

15-120

Five Year Local Option Tax for operations

QUESTION: Shall District impose \$0.92 per \$1,000 of assessed value for five years for operations and minor improvements beginning in FY2014/15?

This measure may cause property taxes to increase more than three percent

SUMMARY: The purpose of this local option tax is to continue to provide funding that will allow Applegate Valley Rural Fire Protection District #9 to operate at the current service delivery levels. Specifically, this levy would allow the following:

- Continue to recruit and retain active volunteer firefighters and medical personnel
- Continued staffing the headquarters fire station 24 hours per day
- Replacement of vehicles and equipment consistent with our five year planning goals
- Enhance our delivery of training for firefighters and emergency medical personnel

The district became levy dependent in 1999. The first levy was for \$1.00 per thousand dollars of assessed value and the last two levies were for 85 cents. This request is for an additional 7 cents per thousand above the current 85 cents, for a total of \$0.92, which is necessary to maintain services at the current level.

This levy would begin FY2014/15. The estimated amount of taxes that would be raised per year is as follows: \$431,370 in 2014/15, \$442,154 in 2015/16, \$453,208 in 2016/17, \$464,538 in 2017/18, and \$476,152 in 2018/19.

Explanatory Statement

The Fire District was making small strides towards improvements prior to 1997. In 1997 voters state-wide approved Measure 47 & 50 which caused a reduction 21.4% in our budget. Additionally, the current law does not allow voters to approve permanent tax rate increases. At the same time local patrons desired more staffing to improve response times. In order to accomplish this, voters approved a five year levy for \$1.00 per thousand of assessed value in 1998. It had been our goal to reduce the amount of the levy over time and the levy was reduced to \$0.85 per thousand and approved by voters again in 2002 and in 2008.

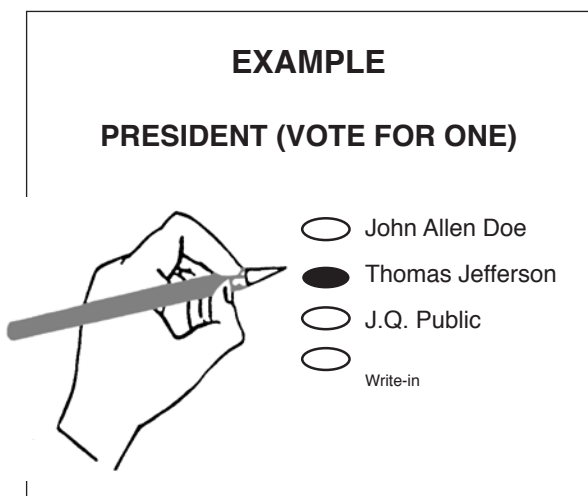
When approved last, in 2008, the Board of Directors felt that it was in our best interest to keep the rate the same even though our costs continued to rise. After several months of discussion, the Board decided that we have little choice but ask for a seven cent increase to the 85 cent levy that we have been operating on since 2003. We believe we are on the right track by providing the services that you have come to expect, while operating as efficiently as possible and making some minor improvements each year.

(This information furnished by Ed Temple, Board President, Applegate Valley Fire District.)

Voting Information

At the Special Election of 2013 the voters of Jackson County will cast their votes on the ballot illustrated below. This page has been inserted into the Voters' Pamphlet as an aid for using this ballot.

1. **To ensure your vote counts, completely fill in the oval (●) with pen (black or blue ink) to the left of the response of your choice.**
2. **TO WRITE IN A NAME** — write the name on the solid line and fill in the oval (●) to the left of the write-in line.

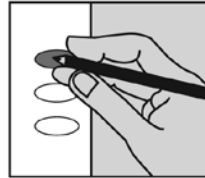


3. **DO NOT CROSS OUT** — if you change your mind, contact the elections department at 774-6148 for a replacement ballot.

Remember, if stated on your ballot, vote both sides of your ballot.

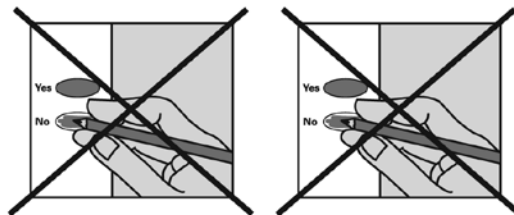
check your ballot!

Make sure you have completely filled in the ovals next to your choices.



If you vote for more candidates than allowed, or if you vote **both Yes and No** on a measure, it is called an overvote.

Your vote **will not count** for that candidate or measure.



You do not have to vote on all contests. Those you do vote on will still count.

Contact Jackson County Elections to request a replacement ballot if:

- you make a mistake
- your ballot is damaged or spoiled
- your ballot is lost

or for any other reason.

Jackson County Elections

1101 W Main Street Suite 201
Medford OR 97501

541 774 6148

www.co.jackson.or.us

Drop Site Locations

Jackson County Elections
1101 W. Main St., Suite 201
Medford, OR 97501

Curbside ballot drop box open 24 hours daily
(left lane – W Main)

Elections office open 8 am to 4 pm
(7 am - 8 pm on Election day)

DEADLINE TO RECEIVE BALLOTS: 8 P.M. ELECTION DAY, November 5, 2013