

voters' pamphlet



Oregon Vote-by-Mail Special Election | **September 15, 2015**

Measure 15-135 Jackson County

Ballot Title

15-135

Adoption of Tax on Diesel Fuel Dealers

Question: Shall the City ordain a two cent diesel fuel tax on fuel dealers to raise revenue for related street repairs?

Summary: Referendum for local ordinance for two cents per gallon of diesel fuel tax.

This measure is submitted to the voters by Phoenix City Council for an ordinance imposing a tax on diesel fuel dealers and establishes the administration for the collection. The tax is imposed when dealers sell diesel fuel within the City. The tax will be paid by gas stations at two cents per gallon. The net revenue will fund construction, improvement and maintenance of City streets and will help maintain the performance of the street system. If approved, the ordinance is effective thirty calendar days following the election.

Explanatory Statement

Due to Fern Valley Interchange Project, the City will be taking on the responsibility for new roads within its city boundaries. This, along with the current maintenance and development projects, results in an anticipated cost in excess of \$3 million to the City in road projects in the near future. The City currently generates only approximately \$414,000 a year through its road fund revenues. These revenues do not cover the current costs for the city's roads and will not cover the responsibilities the city will assume in the near future related to the Fern Valley Interchange.

State law provides that a city, county or other local government may enact or amend any charter provision, ordinance, resolution or other provision taxing fuel for motor vehicles after submitting the proposed tax to the electors of the local government for their approval. For that reason, this measure is submitted to the voters by Phoenix City Council for an ordinance imposing a tax on diesel fuel dealers and establishes the administration for the collection. The measure would impose a two cent per gallon tax on diesel fuel in the City.

The tax will not apply to sales in which diesel fuel is sold for export by a dealer in specified circumstances. The tax will be paid by anyone who buys diesel fuel in the City, mostly truckers transporting freight north and southbound on Interstate 5—residents and nonresidents alike. If passed, the City will use the net tax revenue for the construction, reconstruction, improvement, repair, maintenance and operation of the roads within the City, namely the roads for which the City is required to assume responsibility for the Fern Valley Interchange project.

(This information furnished by Steve Dahl, City of Phoenix.)

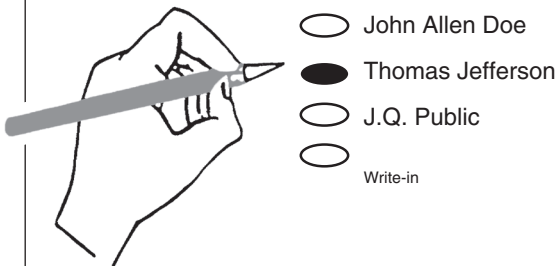
VOTING INSTRUCTIONS

At the Special Election of 2015 the voters of Jackson County will cast their votes on the ballot illustrated below. This page has been inserted into the Voters' Pamphlet as an aid for using this ballot.

1. **To ensure your vote counts, completely fill in the oval (●) with pen (black or blue ink) to the left of the response of your choice.**
2. **TO WRITE IN A NAME** — write the name on the solid line and fill in the oval (●) to the left of the write-in line.

EXAMPLE

PRESIDENT (VOTE FOR ONE)

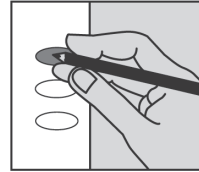


3. **DO NOT CROSS OUT** — if you change your mind, contact the elections department at 774-6148 for a replacement ballot.

Remember, if stated on your ballot, vote both sides of your ballot.

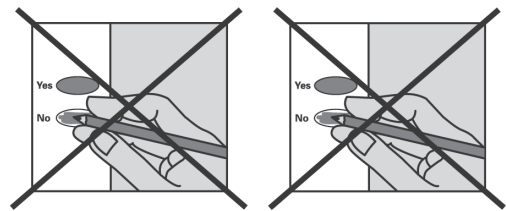
check your ballot!

Make sure you have completely filled in the ovals next to your choices.



If you vote for more candidates than allowed, or if you vote **both** Yes **and** No on a measure, it is called an overvote.

Your vote **will not count** for that candidate or measure.



You do not have to vote on all contests. Those you do vote on will still count.

Contact Jackson County Elections to request a replacement ballot if:

- you make a mistake
- your ballot is damaged or spoiled
- your ballot is lost

or for any other reason.

Jackson County Elections

1101 W Main Street Suite 201
Medford OR 97501

541 774 6148

www.co.jackson.or.us

Drop Site Location

Jackson County Elections

1101 W. Main St., Suite 201

Medford, OR 97501

Curbside ballot drop box open 24 hours daily

(left lane – W Main)

— opening Saturday, August 29, 2015)

Elections office open 8 am to 4 pm

(7 am - 8 pm on Election day)

DEADLINE TO RECEIVE BALLOTS: 8 P.M.

ELECTION DAY, September 15, 2015