



JACKSON COUNTY

Community Justice



Jackson County Community Justice Juvenile Division

Detention Facility Twelve Year Data Trend Reports

SUMMARY

Information on Jackson County juvenile offenders was collected, entered and maintained in the Juvenile Justice Information System (JJIS). JJIS is a state-wide electronic case management system used by all counties in the state of Oregon and maintained by the Oregon Youth Authority.

Items to consider when reviewing data:

Small changes in raw numbers between years may create large percentages. For example, a change from 6 to 2 creates a change of 67%. Review both the raw numbers and percentages to determine the significant of these changes.

SUMMARY

Although total detention admissions had been declining over the last several years, the previous year saw a 7% increase in the use of detention. This total admission number, excluding last year, is still below the last 12 years totals.

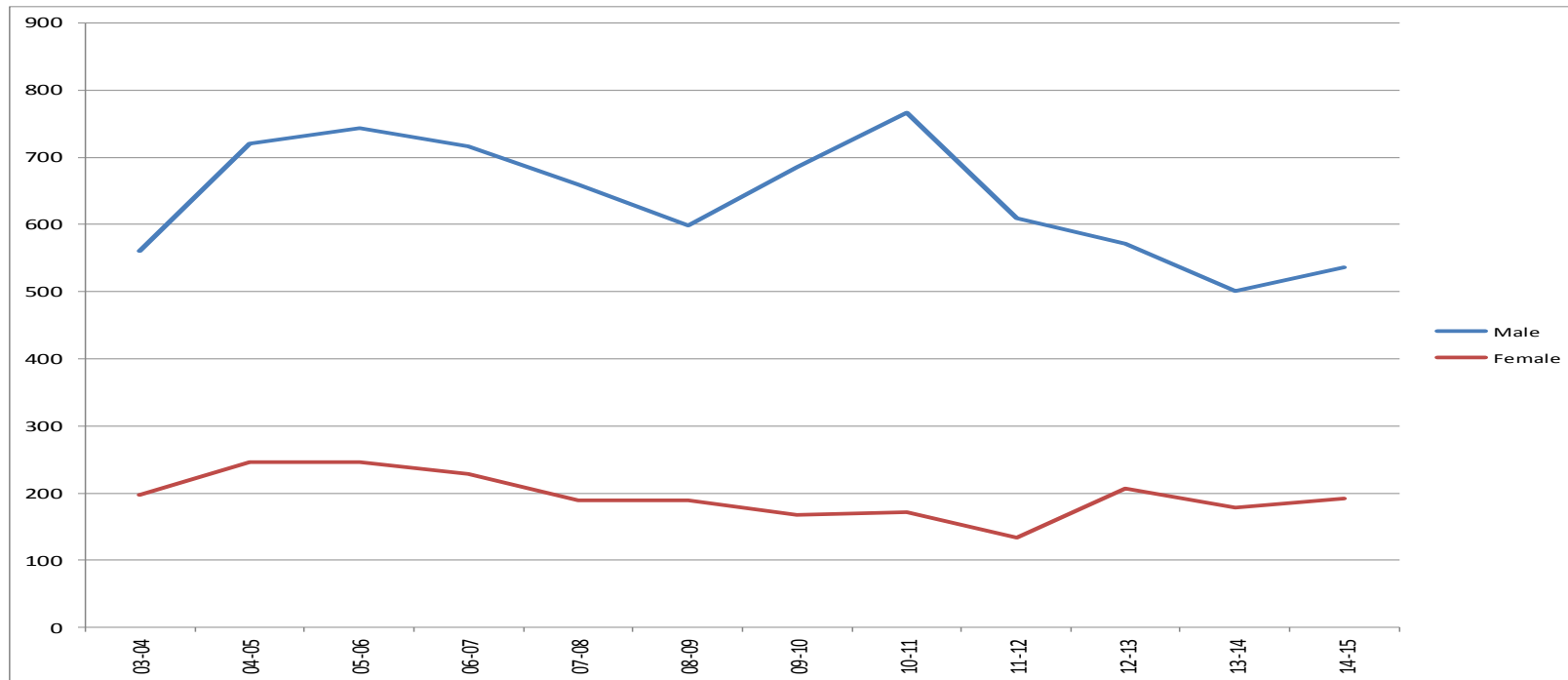
Ages 16 to 17 continue to be the highest number and percentage of youth admitted to the detention facility. 75% of admissions to the detention facility over the last twelve years are male youth. White youth (69%) followed by Hispanic youth (20%) are the largest admissions by race. Probation violations (40%) are the largest admission reason for placement in detention, followed by new law violations (26%), Warrants (13%), Violations of Conditional Release (7%) and Court Order Sanction (7%).

The average daily population in detention has averaged 26 youth over the last six years. Over the last 5 years this has dropped to 23. The average length of stay is approximately 10 days, which is fairly consistent over the last 12 years.

Approximately 35% of youth entered detention only one time over the last 12 years. In 2009-2010 52% of youth entered detention only one time over 12 months. In 2014-2015 this rate was 22%. Males (75%) have consistently been admitted to detention more than females (25%).

**JACKSON COUNTY JUVENILE DETENTION FACILITY
POPULATION REPORT**

Year	Number of total Youth Detained			Unduplicated # of Detained Youth			Time in Custody			Average Length of Stay			Average Daily Population		
	M	F	T	M	F	T	M	F	T	M	F	T	M	F	T
03-04	560	198	758	325	102	427	6436	1952	8388	11.5	9.9	11.1	17.6	5.3	23
04-05	720	246	966	385	121	506	7821	2368	10189	10.9	9.6	10.5	21.4	6.5	28
05-06	743	246	989	424	147	571	11725	2900	14625	16	12	14	32	8	40
06-07	716	229	945	413	150	563	8158	1900	10058	11	8	10	22	5	27
07-08	659	189	848	386	119	505	6594	1634	8228	10	7	9	18	4	22
08-09	598	189	787	348	103	451	7102	1545	8647	12	8	10	19	4	23
09-10	685	168	854	353	95	449	9071	1470	10541	13	9	11	25	4	29
10-11	766	172	939	574	140	715	8874	1526	10116	11.1	8.9	13.1	23.5	4.2	28
11-12	609	134	744	474	105	585	7356	1275	8635	12.1	9.6	11.5	20	3	24
12-13	571	207	778	451	149	600	6676	1726	8402	11.7	8.33	10.8	18.3	4.75	23
13-14	501	178	679	412	141	553	5351	2024	6925	10.6	8.5	10.2	14.7	4.2	19
14-15	536	192	728	410	152	562	5816	1866	7682	10.1	9.7	9.73	16	5.1	21



JUVENILE DIVISION - Detention Program Admission Reasons

The purpose of this section is to track youth placed in the detention program by age, race, gender, admission reason and placement agency.

JACKSON COUNTY JUVENILE DETENTION FACILITY ADMISSION REASON REPORT																													
Year	Age									Race						Custody Reason													
	<12	12	13	14	15	16	17	18	>18	WHT	BLK	ASN	HSP	IND	OTH	Law Vio		Warrant		Prob Vio		VCR		Runaway		COD		ICE	
	M	F	M	F	M	F	M	F	M	F	M	F	M	F	M	F	M	F	M	F	M	F	M	F	M	F	M	F	
03-04	7	45	70	122	152	180	161	21	0	620	27	8	65	21	17	107	29	124	58	184	60	13	13	2	4	129	34	0	0
04-05	11	24	107	151	182	220	223	42	6	747	36	7	110	36	30	146	45	142	55	276	91	29	23	6	4	121	27	0	0
05-06	5	22	72	129	252	208	223	63	15	746	49	25	111	27	31	167	71	89	44	282	75	46	14	5	8	94	21	0	0
06-07	11	30	51	112	204	265	217	47	7	696	47	20	141	18	23	178	79	109	28	253	57	46	21	3	3	75	27	9	0
07-08	12	19	51	92	178	209	239	41	7	579	37	15	178	22	17	181	64	84	26	276	54	49	16	3	6	38	12	0	0
08-09	1	21	71	92	150	180	210	48	14	548	30	6	182	12	9	144	52	72	26	287	71	28	16	3	2	40	14	0	0
09-10	3	15	71	150	138	207	211	46	13	584	42	5	190	18	15	159	53	87	22	309	59	52	13	4	2	52	5	0	0
10-11	2	14	72	157	171	225	235	48	15	629	57	5	207	24	17	161	59	87	22	403	55	48	10	3	6	35	5	0	0
11-12	6	14	46	97	152	193	191	40	5	483	37	21	156	18	29	145	37	83	16	278	55	38	9	0	4	12	4	1	0
12-13	1	6	43	75	146	124	139	47	7	378	25	19	129	26	11	87	40	78	13	195	64	30	17	3	2	36	10	0	0
13-14	1	18	41	66	86	120	136	26	10	354	34	5	88	17	6	93	41	47	18	155	45	34	11	2	2	44	12	0	0
14-15	0	17	43	89	140	191	178	47	10	485	37	5	149	15	24	165	75	67	32	155	64	56	13	1	1	59	19	0	0
Totals	42	176	561	1059	1617	1922	1979	453	103	5482	395	126	1531	197	182	1480	571	803	247	2593	599	427	140	27	36	485	129	10	0

Information obtained from JJIS report #85

WHT: White

Law Vio: Law Violation

VCR: Violation of Conditional Release

ICE: Immigration and Customs Enforcement

BLK: Black

Warrant: Warrant

Runaway: Out of State Runaway

ASN: Asian

HSP: Hispanic

Prob Vio: Probation Violation

COD: Court Ordered Detention

IND: Indian

OTH: Other