



# JACKSON COUNTY

*Community Justice*



## **Jackson County Community Justice Juvenile Division**

### **Recidivism Ten Year Data Trend Reports**

## SUMMARY

Information on Jackson County juvenile offenders was collected, entered and maintained in the Juvenile Justice Information System (JJIS). JJIS is a state-wide electronic case management system used by all counties in the state of Oregon and maintained by the Oregon Youth Authority.

Recidivism is defined in three measurements to assist in determining different levels of involvement of youth in the juvenile justice and adult systems.

Recidivism by Referral: Any new criminal referral (arrest) within a 12 month period. No action needs to be taken by department to count against recidivism.

Recidivism by New Criminal Adjudication: Youth has been adjudicated/sentenced by the Court within a 12/24 month period for a new criminal (misdemeanor or felony) offense.

Recidivism by New Felony Adjudication: Youth has been adjudicated/sentenced by the Court within a 12/24 month period for a new felony offense

### Items to consider when reviewing data:

Small changes in raw numbers between years may create large percentages. For example, a change from 6 to 2 creates a change of 67%. Review both the raw numbers and percentages to determine the significant of these changes.

## SUMMARY

Recidivism is also looked at specifically with Probation and Formal Accountability Agreements (Diversion). Each of these two areas have recidivism data by the three measurements above. Due to data limitations, recidivism by new criminal referral does not track youth that have entered into the adult system in 12 or 24 months. However, both any criminal adjudication and any felony adjudication does track youth that have entered the adult system in 12 and 24 month.

Probation recidivism is much higher than the average recidivism of the department. These youth have been assessed as medium and high risk to have additional criminal offenses referred to the department. More than half the youth on probation do not have a new criminal offense referral while on probation, with the exception of 2009-2010 over 24 months. Youth that have 3 or more criminal referrals have been below 10% the last two years of data. Recidivism of a criminal adjudication has dropped under 20% the last two years as well. Youth moving into the adult justice system for both 12 and 24 months has been 1%- 0% over the last two years.

Formal Accountability Agreements (Diversion) is just lower, on average, as the overall department recidivism rate. These youth have been assessed as low and medium risk to have additional criminal offenses referred to the department. More than 75% of youth do not have a new criminal offense referral while on these agreements. Youth that have 3 or more criminal referrals are below 8% on average. Recidivism of a criminal adjudication is less than 10% over the last 4 years and 1% or less of youth moving into the adult justice system for both 12 and 24 months.

Overall recidivism has been steadily declining slightly or remaining flat over the last ten years. However, in 2013 there was nearly a 1% increase for Jackson County. In reviewing the data, there was a 5% increase in recidivism for females and a 1% decrease for males overall. Those youth considered to be chronic offenders (3 or more referrals to department) showed more than a 1% reduction in 2013.

Based on 2012 data, African American youth are recidivating at a much higher rate of 46%, Native American youth at 39% and Asian youth at 36%. Hispanic youth have the lowest recidivism rate at 23%. These numbers can be misleading at times however due to low overall numbers of youth of certain races and where youth of certain gangs have been sent to the Youth Correctional Facilities and removed from the community so they are not continuing to commit crimes.

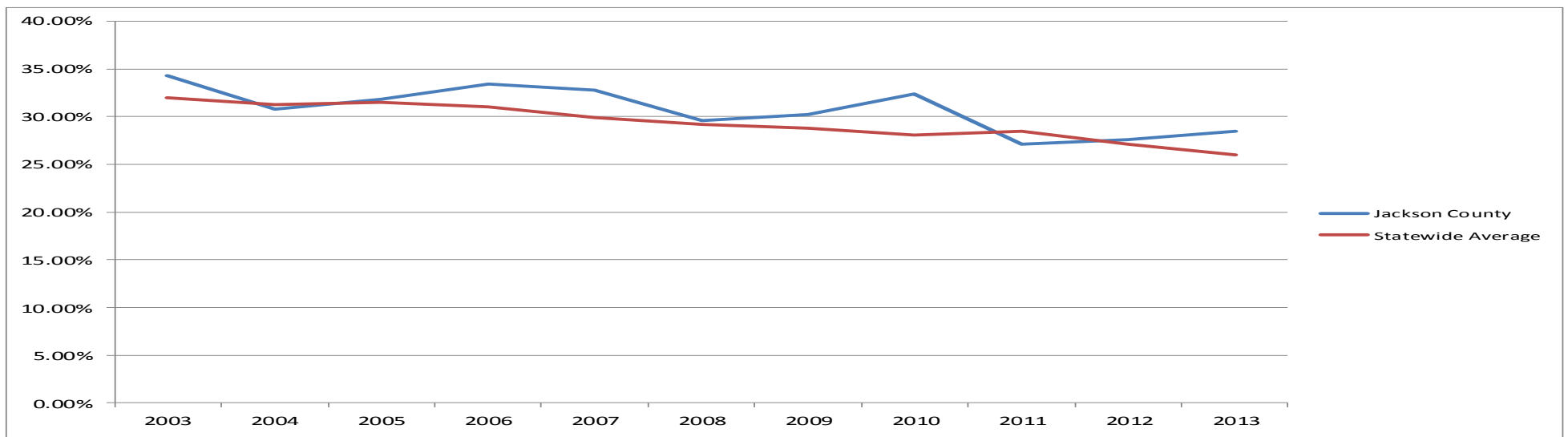
## JACKSON COUNTY COMMUNITY JUSTICE - JUVENILE SERVICES

### RECIDIVISM by REFERRAL

		2003	2004	2005	2006	2007	2008	2009	2010	2011	2012	2013
Number of Youth		1422	1327	1187	1310	1209	1201	1164	1014	920	812	685
No subsequent Referral		934/65.7%	918/69.2%	809/68.2%	873/66.6%	813/67.2%	846/70.4%	812/69.8%	685/67.6%	671/72.9%	588/72.4%	490/71.5%
Subsequent Referral		488/ <b>34.3%</b>	409/ <b>30.8%</b>	378/ <b>31.8%</b>	437/ <b>33.4%</b>	397/ <b>32.8%</b>	355/ <b>29.6%</b>	353/ <b>30.2%</b>	329/ <b>32.4%</b>	249/ <b>27.1%</b>	224/ <b>27.6%</b>	195/ <b>28.5%</b>
1 to 2 Referrals		365/25.7%	320/24.1%	318/26.8%	348/26.6%	308/25.5%	294/24.5%	291/25%	272/26.8%	195/21.2%	178/21.9%	164/23.9%
3 or More Referrals		123/8.6%	89/6.7%	60/5.1%	89/6.8%	89/7.4%	61/5.1%	61/5.2%	57/5.6%	54/5.9%	46/5.7%	31/4.5%
Statewide Average		<b>32%</b>	<b>31.30%</b>	<b>31.50%</b>	<b>31.00%</b>	<b>29.90%</b>	<b>29.20%</b>	<b>28.80%</b>	<b>28.10%</b>	<b>28.50%</b>	<b>27.10%</b>	<b>26.00%</b>
<b>By Gender</b>	Male	39%	32.50%	35.90%	35%	35.50%	31.20%	33.90%	36.30%	29.20%	31.30%	30.00%
	Female	24.30%	27.20%	23.50%	30.30%	27.50%	26%	23%	23.40%	22.80%	20.70%	25.80%
<b>By Race</b>	African American	34.20%	41.20%	48.10%	48.60%	30.20%	19.40%	35.50%	39.50%	28.30%	46.20%	25.00%
	Asian	18.20%	0%	16.70%	50%	20%	30%	44.40%	25%	22.20%	36.40%	55.60%
	Caucasian	35.30%	31%	31.70%	33%	32.50%	29.40%	28.70%	31.20%	25.90%	27.40%	28.80%
	Hispanic	33.80%	33.30%	36%	36.40%	37.80%	34.60%	35.60%	36.20%	30.80%	23.30%	26.30%
	Native American	52.20%	35.30%	50%	44.40%	50%	31.60%	50%	38.90%	37.50%	39.10%	35.30%
	Other/Unknown	12.30%	16.70%	19.40%	16.30%	16.20%	11.10%	12%	22.20%	16.70%	26.70%	22.20%

#### Race by Number of Criminal Referrals (Jackson County percentage next to race category)

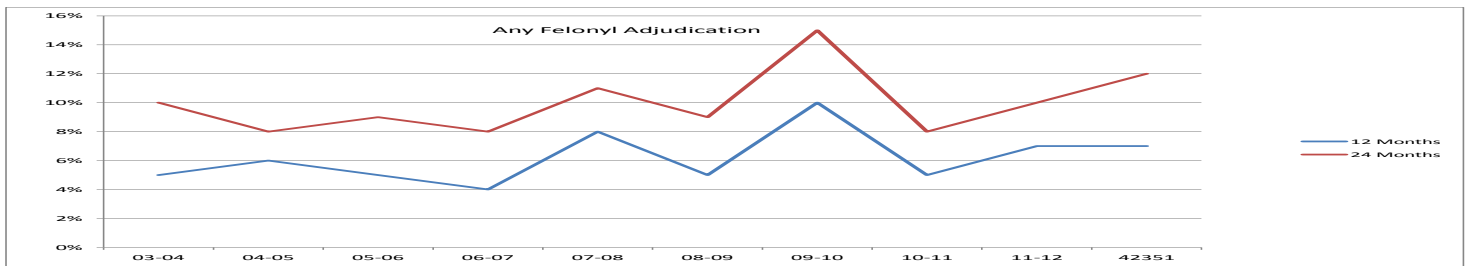
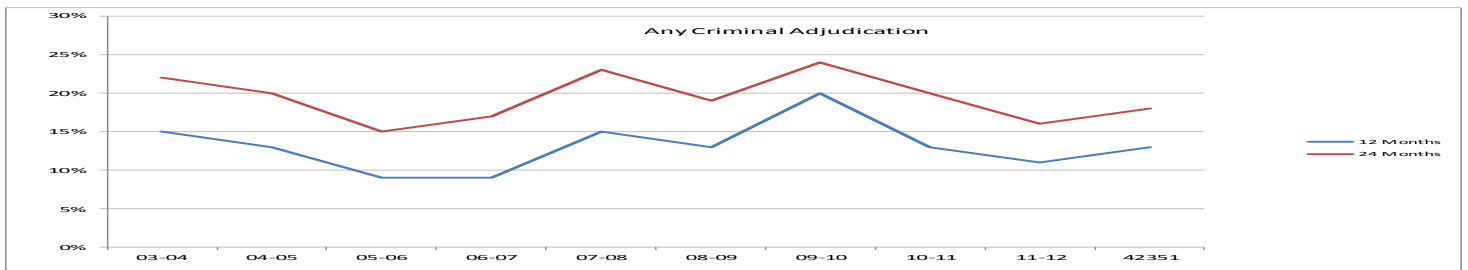
African American (0.7%)	32/2.2%	38/2.8%	29/2.2%	38/3.1%	43/3.4%	33/2.7%	29/2.4%	37/3.7%	48/4.8%	38/4.2%	20/3%
Asian (1.3%)	10/0.7%	8/0.6%	6/0.5%	10/0.8%	14/1.1%	9/0.7%	10/0.8%	11/1.1%	17/1.7%	13/1.4%	9/2%
Caucasian (94.3%)	1121/76.8%	1082/79.3%	1066/80.4%	990/80.9%	972/77.6%	906/74.7%	896/74%	744/73.4%	702/70.6%	620/69.1%	497/72%
Hispanic (9.4%)	145/9.9%	155/11.4%	137/10.3%	131/10.7%	169/13.5%	210/17.3%	228/18.8%	197/19.4%	197/19.8%	178/19.8%	133/19%
Native American (1.2%)	21/1.4%	25/1.8%	18/1.4%	10/0.8%	20/1.6%	23/1.9%	17/1.4%	13/1.3%	23/2.3%	27/3%	17/2%
Other/Unknown (2.5%)	131/9.0%	57/4.2%	70/5.3%	45/3.7%	35/2.8%	32/2.6%	30/2.5%	11/1.1%	7/0.7%	21/2.3%	9/2%



**JACKSON COUNTY COMMUNITY JUSTICE - JUVENILE SERVICES**

**RECIDIVISM by PROBATION**

	03-04		04-05		05-06		06-07		07-08		08-09		09-10		10-11		11-12		12-13	
	12	24	12	24	12	24	12	24	12	24	12	24	12	24	12	24	12	24	12	24
<b>PROBATION - Any New Criminal Offense</b> * Data <u>DOES NOT</u> include adult criminal arrests as data is not available																				
Number of Youth	191		187		184		155		142		147		135		155		98		96	
No sub Referral	54%	46%	60%	55%	65%	59%	60%	52%	59%	51%	66%	56%	56%	48%	65%	55%	65%	57%	68%	59%
Subsequent Referral	46%	54%	40%	45%	35%	41%	40%	48%	41%	49%	34%	44%	44%	52%	35%	45%	35%	43%	32%	41%
1 to 2 Referrals	38%	38%	33%	34%	30%	29%	33%	34%	35%	39%	26%	31%	34%	35%	30%	35%	30%	36%	30%	33%
3 or More Referrals	8%	16%	6%	12%	5%	13%	8%	14%	6%	10%	8%	13%	10%	17%	5%	10%	5%	7%	2%	7%
<b>PROBATION - Any Criminal Adjudicated Offense</b> * Data <u>DOES</u> include adult criminal sentences																				
Number of Youth	191		187		184		155		142		147		135		155		98		96	
No sub Adjudication	85%	78%	87%	80%	91%	85%	83%	91%	85%	77%	87%	81%	80%	76%	87%	80%	89%	84%	87%	82%
Subsequent Adjud	15%	22%	13%	20%	9%	15%	9%	17%	15%	23%	13%	19%	20%	24%	13%	20%	11%	16%	13%	18%
No Adult Sentence	99%	97%	98%	92%	99%	97%	99%	100%	98%	89%	99%	95%	98%	96%	99%	96%	100%	99%	100%	100%
Adult Sentence	1%	3%	2%	8%	1%	3%	1%	1%	2%	11%	1%	5%	2%	4%	1%	4%	0%	1%	0%	0%
<b>PROBATION - Felony Adjudicated Offense</b> * Data <u>DOES</u> include adult criminal sentences																				
Number of Youth	191		187		184		155		142		147		135		155		98		96	
No sub Adjudication	95%	90%	94%	82%	95%	91%	96%	92%	82%	89%	95%	91%	90%	85%	95%	92%	93%	90%	93%	88%
Subsequent Adjud	5%	10%	6%	8%	5%	9%	4%	8%	8%	11%	5%	9%	10%	15%	5%	8%	7%	10%	7%	12%
No Adult Sentence	99%	98%	98%	93%	99%	98%	100%	99%	99%	89%	99%	96%	98%	96%	99%	96%	100%	99%	100%	100%
Adult Sentence	1%	2%	2%	7%	1%	2%	0%	1%	1%	11%	1%	4%	2%	4%	1%	4%	0%	1%	0%	0%



**JACKSON COUNTY COMMUNITY JUSTICE - JUVENILE SERVICES**

**RECIDIVISM by FORMAL ACCOUNTABILITY AGREEMENT**

	03-04		04-05		05-06		06-07		07-08		08-09		09-10		10-11		11-12		12-13	
	12	24	12	24	12	24	12	24	12	24	12	24	12	24	12	24	12	24	12	24
<b>FORMAL ACCOUNTABILITY AGREEMENT - Any New Criminal Offense Referral</b>																				
<b>* DOES NOT include adult criminal arrests</b>																				
Number of Youth	433		453		408		270		264		306		210		245		148		142	
No sub Referral	76%	67%	78%	69%	78%	70%	73%	65%	71%	60%	73%	61%	77%	70%	77%	65%	76%	67%	83%	73%
Subsequent Referral	24%	33%	22%	31%	22%	30%	27%	35%	29%	40%	27%	39%	23%	30%	23%	35%	24%	33%	17%	27%
1 to 2 Referrals	19%	25%	20%	25%	20%	23%	21%	25%	23%	28%	23%	29%	21%	22%	20%	30%	20%	26%	16%	23%
3 or More Referrals	5%	9%	2%	6%	3%	8%	6%	10%	6%	12%	4%	10%	2%	8%	3%	6%	3%	7%	1%	4%
<b>FORMAL ACCOUNTABILITY AGREEMENT - Any Criminal Adjudicated Offense</b>																				
<b>* DOES include adult criminal sentences</b>																				
Number of Youth	433		453		408		270		264		302		210		245		148		142	
No sub Adjudication	93%	88%	95%	90%	95%	93%	94%	91%	91%	85%	93%	88%	96%	92%	94%	91%	91%	86%	83%	73%
Subsequent Adjud	7%	12%	5%	10%	5%	7%	6%	9%	9%	16%	7%	12%	4%	8%	6%	9%	9%	14%	17%	27%
No Adult Sentence	99%	99%	99%	98%	99%	98%	100%	98%	100%	98%	99%	99%	99%	99%	100%	100%	100%	99%	100%	99%
Adult Sentence	1%	1%	1%	2%	1%	2%	0%	2%	0%	2%	1%	1%	1%	1%	0%	0%	0%	1%	0%	1%
<b>FORMAL ACCOUNTABILITY AGREEMENT - Felony Adjudicated Offense</b>																				
<b>* DOES include adult criminal sentences</b>																				
Number of Youth	433		453		408		270		264		302		210		245		148		142	
No sub Adjudication	97%	95%	98%	95%	98%	97%	97%	96%	96%	94%	98%	95%	98%	96%	97%	96%	97%	93%	97%	94%
Subsequent Adjud	3%	5%	2%	5%	2%	3%	3%	4%	4%	6%	2%	5%	2%	4%	3%	4%	3%	7%	3%	6%
No Adult Sentence	100%	99%	99%	99%	99%	99%	100%	98%	100%	98%	99%	99%	99%	99%	100%	100%	100%	99%	100%	99%
Adult Sentence	0%	1%	1%	1%	1%	1%	0%	2%	0%	2%	1%	1%	1%	1%	0%	0%	0%	1%	0%	1%

