



JACKSON COUNTY
Community Justice



**Jackson County Community Justice
Juvenile Division**

**Juvenile Crime Prevention Risk Assessments
Twelve Year Data Trend Reports**

SUMMARY

Information on Jackson County juvenile offenders was collected, entered and maintained in the Juvenile Justice Information System (JJIS). JJIS is a state-wide electronic case management system used by all counties in the state of Oregon and maintained by the Oregon Youth Authority.

Items to consider when reviewing data:

Small changes in raw numbers between years may create large percentages. For example, a change from 6 to 2 creates a change of 67%. Review both the raw numbers and percentages to determine the significant of these. Reported risk assessments have benefits and limitations.

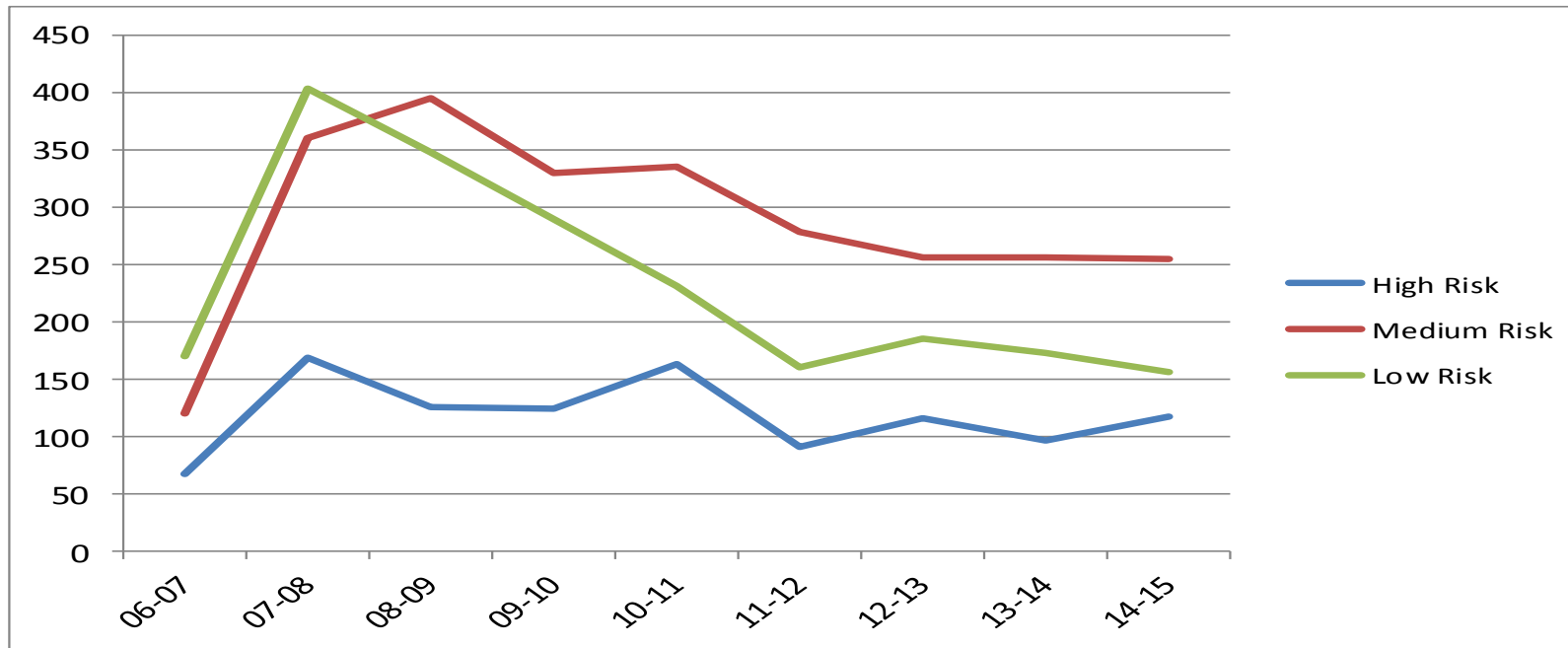
SUMMARY

The total number of assessments being completed corresponds with the overall number of youth being referred to the department for criminal offenses or that are on probation. Over the last two years the percentages of low, medium and high risk youth has been fairly consistent. In 2014-2015 fiscal year the majority of youth receiving an initial risk assessment are medium risk (42%). Low risk followed with 33% and 25% for high risk. Youth that go onto formal probation show the majority as medium risk (61%) on re-assessments that are conducted every six months.

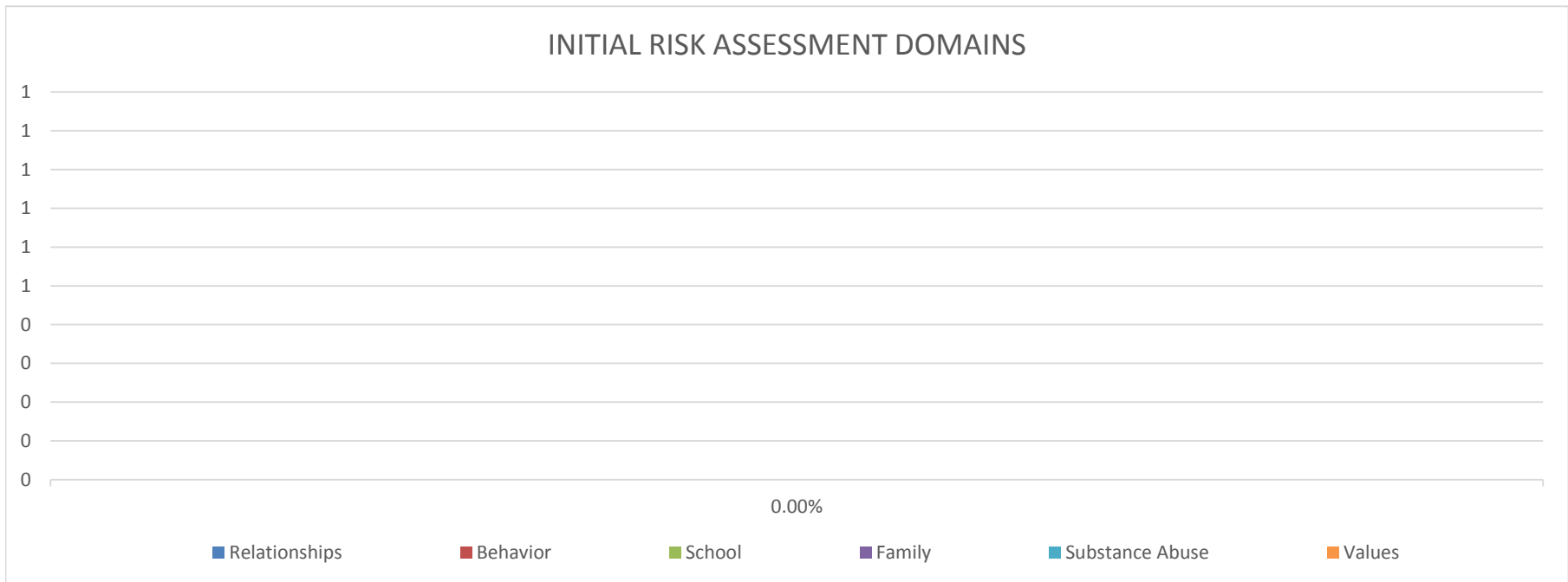
Initial risk assessments have consistently shown that peer/other relationships, behavior issues and school issues are the top three areas of concern with youth referred to the department. Family functioning has been a growing area of concern over the last two years.

Re-Assessments have also shown that peer/other relationships, behavior issues and Family issues are the top three areas of concern.

JACKSON COUNTY COMMUNITY JUSTICE - JUVENILE SERVICES									
	2006-2007	2007-2008	2008-2009	2009-2010	2010-2011	2011-2012	2012-2013	2013-2014	2014-2015
JCP Risk Assessment									
Initial Assessment (Intake)									
High Risk	55/17.7%	112/18.6%	80/12.4%	77/15.9%	92/21%	86/25%	66/21%	71/20%	90/25%
Medium Risk	104/33.4%	179/29.7%	219/33.8%	181/37.4%	164/38%	137/40%	101/33%	138/39%	150/42%
Low Risk	152/48.9%	311/51.7%	348/53.8%	226/46.7%	175/40%	122/35%	141/46%	147/41%	118/33%
Total Initial Assessment	311	602	647	484	431	345	308	356	358
Re-Assessment (Probation)									
High Risk	13/27.7%	57/17.3%	46/15.2%	48/18.4%	72/23%	50/22%	50/20%	26/15%	28/16%
Medium Risk	16/34%	181/54.8%	176/58.3%	149/57.1%	172/57%	142/61%	156/62%	118/69%	105/61%
Low Risk	18/38.3%	92/27.9%	80/26.5%	64/24.5%	57/18%	39/17%	44/18%	26/15%	38/22%
Total Re-Assessments	47	330	302	261	301	231	250	170	171
TOTALS	358	932	949	745	732	576	558	526	529



Juvenile Crime Prevention Risk Assessments													
	Risk Domain	03-04	04-05	05-06	06-07	07-08	08-09	09-10	10-11	11-12	12-13	13-14	14-15
Initial	School Issues	Data Unavailable				52.18%	56.63%	60.78%	60.18%	63.38%	56.30%	62.15%	70.53%
	Peer/Other Relationships	Data Unavailable				72.08%	76.65%	76.98%	80.70%	76.28%	72.28%	90.10%	97.18%
	Behavior Issues	Data Unavailable				74.00%	70.50%	78.65%	80.63%	82.25%	75.68%	79.18%	81.35%
	Family Functioning	Data Unavailable				45.00%	47.48%	53.18%	54.03%	59.45%	57.75%	62.25%	67.35%
	Substance Abuse	Data Unavailable				32.50%	35.98%	37.58%	43.80%	49.58%	42.80%	39.93%	46.98%
	Attitudes, Values & Beliefs	Data Unavailable				22.00%	13.35%	22.63%	26.95%	29.88%	26.28%	23.55%	22.40%



School: Attachment/commitment, academic performance, truancy, dropout, suspensions, expulsions, family involvement, learning disability.

Relationships: Friends disapprove of unlawful behavior, friends engage in unlawful acts, friends who have been suspended / expelled / dropped out of school, friends who are academic achievers, substance abusing friends, adult mentor, lives in low crime area.

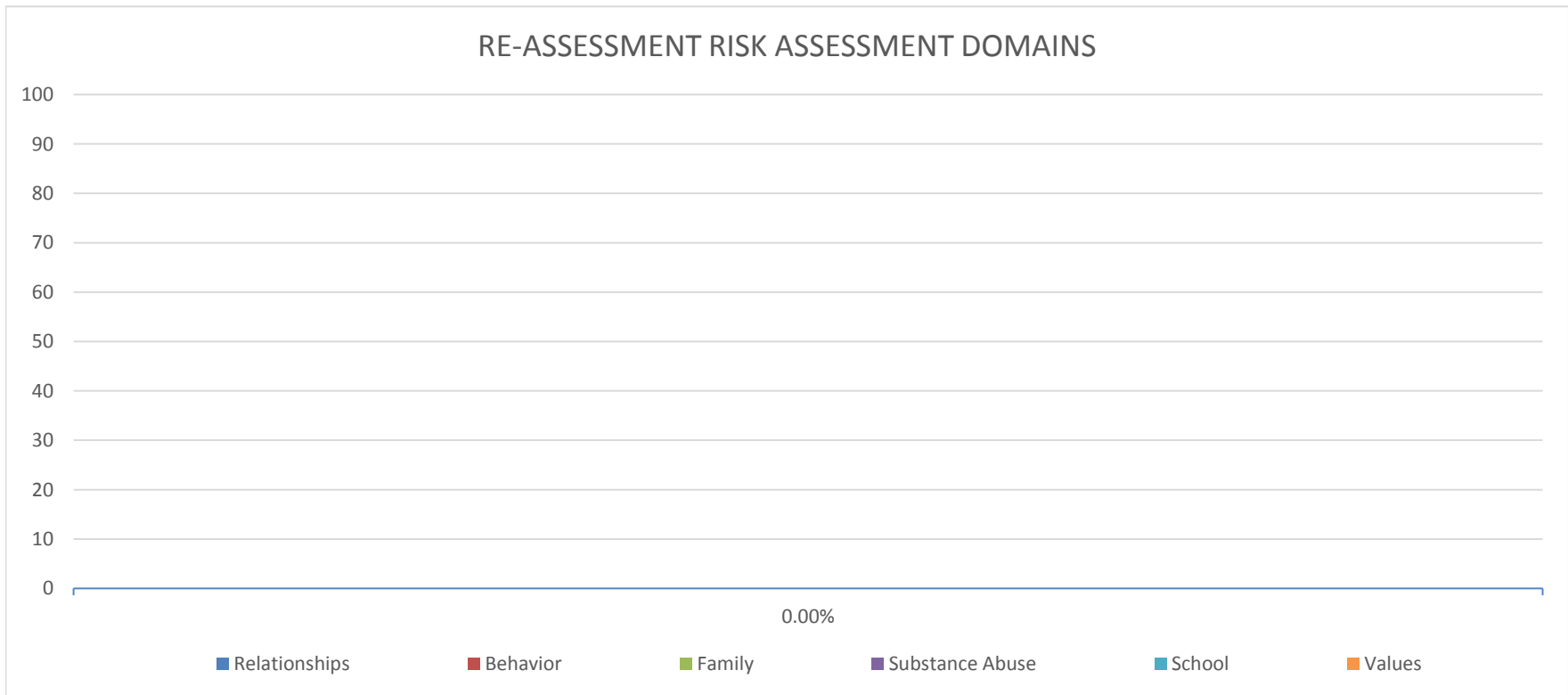
Behavior: Aggressive, disruptive behavior at school, 3 or more criminal referrals, referred at age 13 or younger, extra-curricular activities, runaway, behavior hurts others, harms animals, preoccupation with weapons, setting of fires.

Family: Communication, supervision, conflicts, abuse/neglect, family criminal, substance abuse, trauma, supportive family member,

Substance Abuse: Beyond experimental use, causing problems in life, use began at age 13 or younger, high/drank at school

Values, Attitudes & Beliefs: Anti-social thinking/ attitudes/ values/ beliefs, no empathy/ remorse/ sympathy/ feelings for others, responsibility, inaccurate interprets actions/intentions of others as hostile, positive aspirations for future, preoccupied with antisocial behavior.

Juvenile Crime Prevention Risk Assessments													
	Risk Domain	03-04	04-05	05-06	06-07	07-08	08-09	09-10	10-11	11-12	12-13	13-14	14-15
Re-Assessment	School Issues	Data Unavailable				59.55%	59.78%	58.10%	65.13%	60.55%	59.75%	62.53%	64.20%
	Peer/Other Relationships	Data Unavailable				92.88%	93.38%	94.55%	96.88%	98.90%	97.03%	98.25%	99.48%
	Behavior Issues	Data Unavailable				95.23%	94.70%	96.50%	96.73%	98.63%	98.33%	98.28%	98.33%
	Family Functioning	Data Unavailable				77.05%	77.28%	78.73%	85.35%	90.23%	90.85%	85.68%	88.08%
	Substance Abuse	Data Unavailable				64.30%	67.63%	69.45%	73.15%	78.28%	73.45%	73.95%	77.85%
	Attitudes, Values & Beliefs	Data Unavailable				36.08%	40.63%	41.38%	50.20%	59.40%	53.75%	61.15%	53.80%



School: Attachment/commitment, academic performance, truancy, dropout, suspensions, expulsions, family involvement, learning disability.

Relationships: Friends disapprove of unlawful behavior, friends engage in unlawful acts, friends who have been suspended / expelled /

Behavior: Aggressive, disruptive behavior at school, 3 or more criminal referrals, referred at age 13 or younger, extra-curricular

Family: Communication, supervision, conflicts, abuse/neglect, family criminal, substance abuse, trauma, supportive family member,

Substance Abuse: Beyond experimental use, causing problems in life, use began at age 13 or younger, high/drunken at school

Values, Attitudes & Beliefs: Anti-social thinking/ attitudes/ values/ beliefs, no empathy/ remorse/ sympathy/ feelings for others,