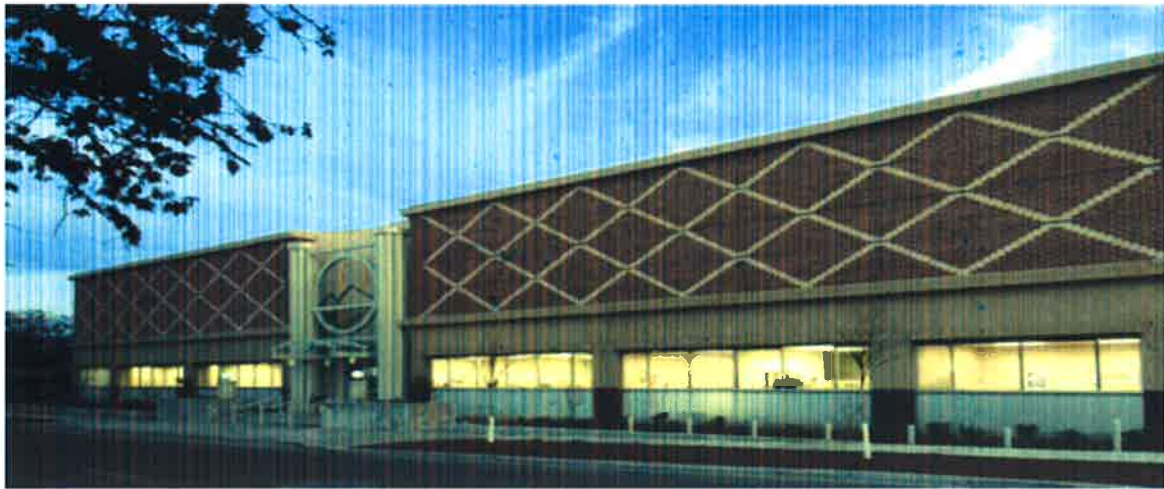




# JACKSON COUNTY

*Community Justice*



## **Jackson County Community Justice Juvenile Division**

## **Referrals by Referring Police Agencies Data Trend Reports**

## **A NOTE ABOUT DATA**

Information on Jackson County juvenile offenders was collected, entered and maintained in the Juvenile Justice Information System (JJIS). JJIS is a state-wide electronic case management system used by all counties in the state of Oregon and maintained by the Oregon Youth Authority.

### **Items to consider when reviewing data:**

Small changes in raw numbers between years may create large percentages. For example, a change from 6 to 2 creates a change of 67%. Review both the raw numbers and percentages to determine the significant of these changes. Data in this report represents crimes that have a corresponding referral to the Community Justice Juvenile Division Services which is the juvenile justice provider in the county.

If a juvenile crime occurred that was not reported, or law enforcement did not create a referral regarding the crime, it is not included in this data.

### **SUMMARY**

Analyzing referrals from specific cities within our County provides assists in determining the appropriate resources on a geographic basis. This also assists in working with local communities on efforts to deter and respond to criminal behavior by juveniles.

**Purpose**

The purpose of this report is to provide statistics on the number of allegations by the specified original referral county. Each allegation is counted one time.

**Description**

This report counts each allegation on the referral. The report is grouped by Criminal Category or Offense Type (criminal / non-criminal). The report summarizes by number of allegations.

JACKSON COUNTY COMMUNITY JUSTICE - JUVENILE DIVISION																		
Referral by Police Agency																		
YEAR	APD		CPPD		EPPD		MPD		PPD		RRPD		TPD		SO		Totals	
	Criminal	Non-Crim	Criminal	Non-Crim	Criminal	Non-Crim	Criminal	Non-Crim	Criminal	Non-Crim	Criminal	Non-Crim	Criminal	Non-Crim	Criminal	Non-Crim	Criminal	Non-Crim
2006-2007	169	117	270	100	245	64	1243	322	87	16	26	19	72	24	306	65	2418	727
2007-2008	153	153	160	132	201	68	1240	408	87	28	46	23	65	36	366	62	2318	910
2008-2009	139	75	160	92	217	37	1191	321	47	13	25	6	85	17	410	74	2274	635
2009-2010	58	98	281	76	131	46	1121	268	38	20	41	17	59	13	246	56	1975	594
2010-2011	169	97	227	107	115	31	1036	219	97	22	32	6	81	23	278	71	2035	576
2011-2012	130	101	145	69	215	44	891	253	61	20	16	12	140	17	265	76	1863	592
2012-2013	149	76	165	49	154	30	683	168	44	10	12	3	63	6	166	57	1436	399
2013-2014	61	35	77	29	132	35	661	190	40	25	2	1	49	4	170	31	1192	350
2014-2015	98	30	74	44	135	27	817	219	38	19	0	1	59	17	129	24	1350	381
2015-2016	90	27	96	82	130	50	539	220	18	12	2	1	25	7	133	20	1033	419
2016-2017	78	27	64	39	66	26	505	127	44	12	0	0	51	18	105	26	913	275
2017-2018	55	26	106	62	44	26	539	97	29	6	2	0	38	5	76	17	889	239
% of Police Rpt	8%	9%	7%	15%	7%	9%	55%	46%	4%	4%	0%	0	5%	6%	11%	9%	77%	23%
% of Police Rpt	8%		8%		7%		53%		4%		0		5%		11%			

Information obtained from JJIS report #57

Increase from previous year

APD = Ashland Police Dept  
 MPD = Medford Police Dept  
 TPD = Talent Police Dept

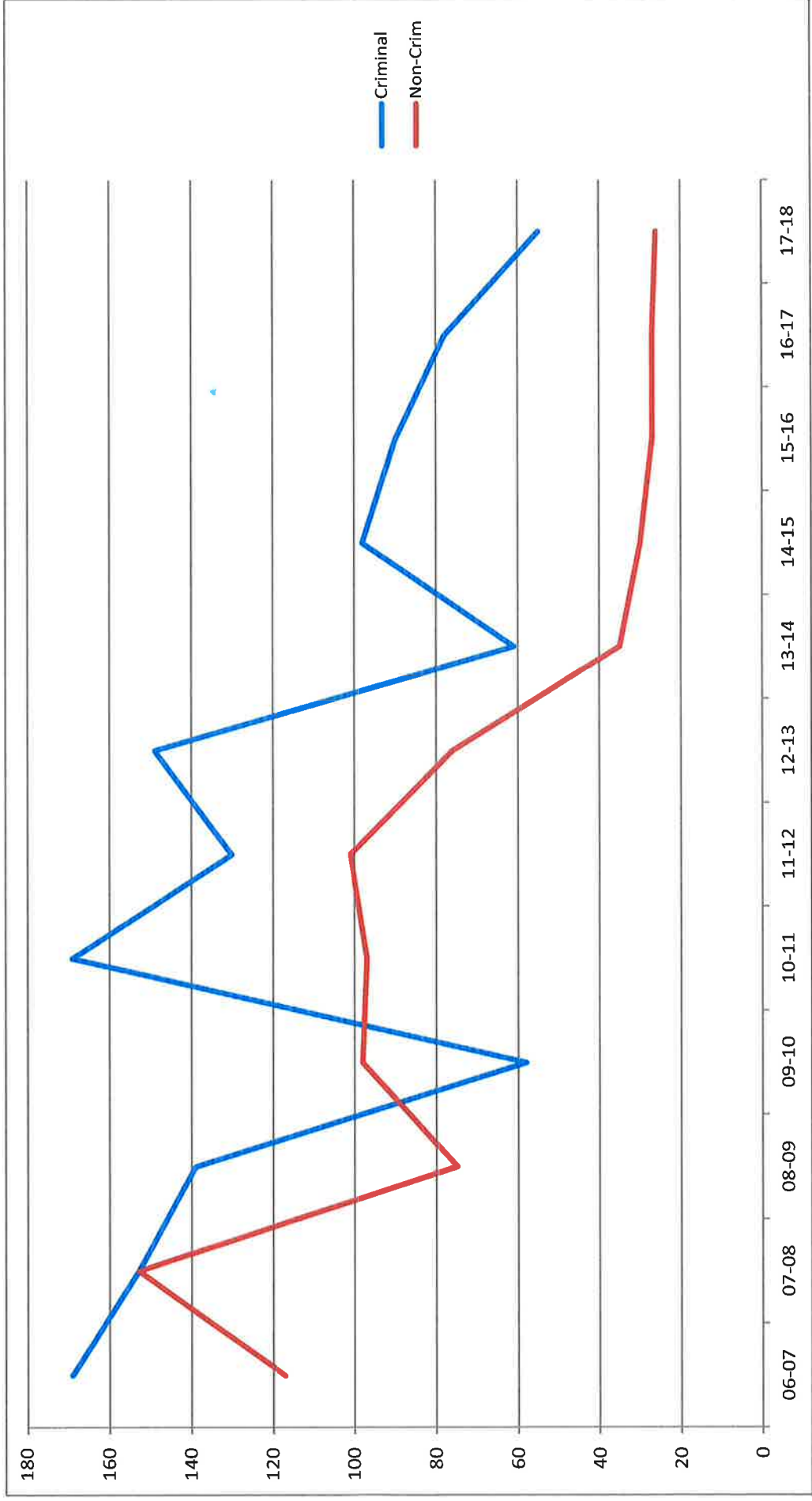
CPPD = Central Point Police Dept  
 PPD = Phoenix Police Dept  
 SO = Sheriff's Dept

EEPD = Eagle Point Police Dept  
 RRPD = Rogue River Police Dept

Non-Criminal: Minor in Possession of alcohol, Less than one ounce of marijuana, curfew, tobacco, no bicycle or skateboard helmet (does not include dependency such as runaway or beyond parental control)

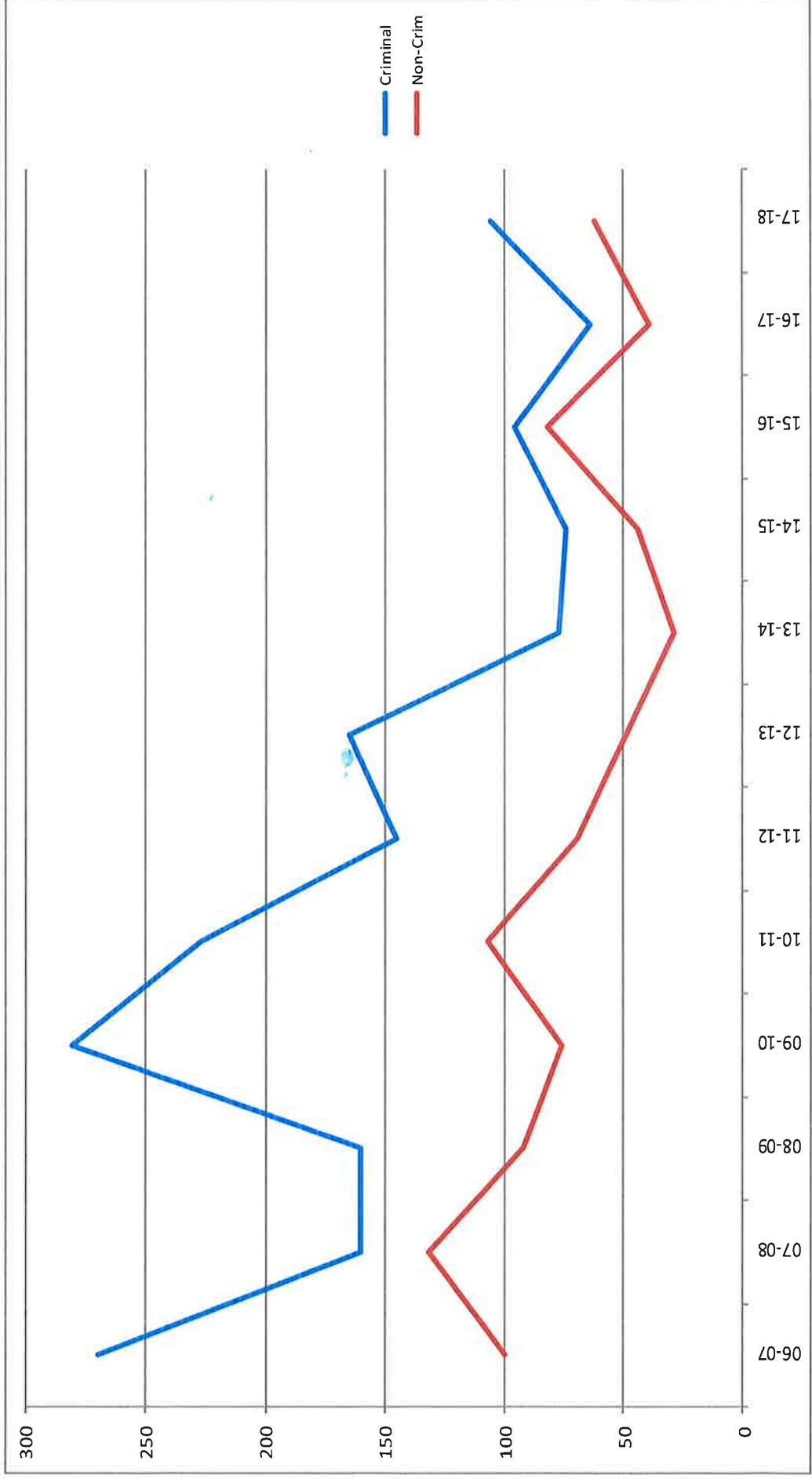
# Ashland Police Department - Referrals

	06-07	07-08	08-09	09-10	10-11	11-12	12-13	13-14	14-15	15-16	16-17	17-18
Criminal	169	153	139	58	169	130	149	61	98	90	78	55
Non-Criminal	117	153	75	98	97	101	76	35	30	27	27	26



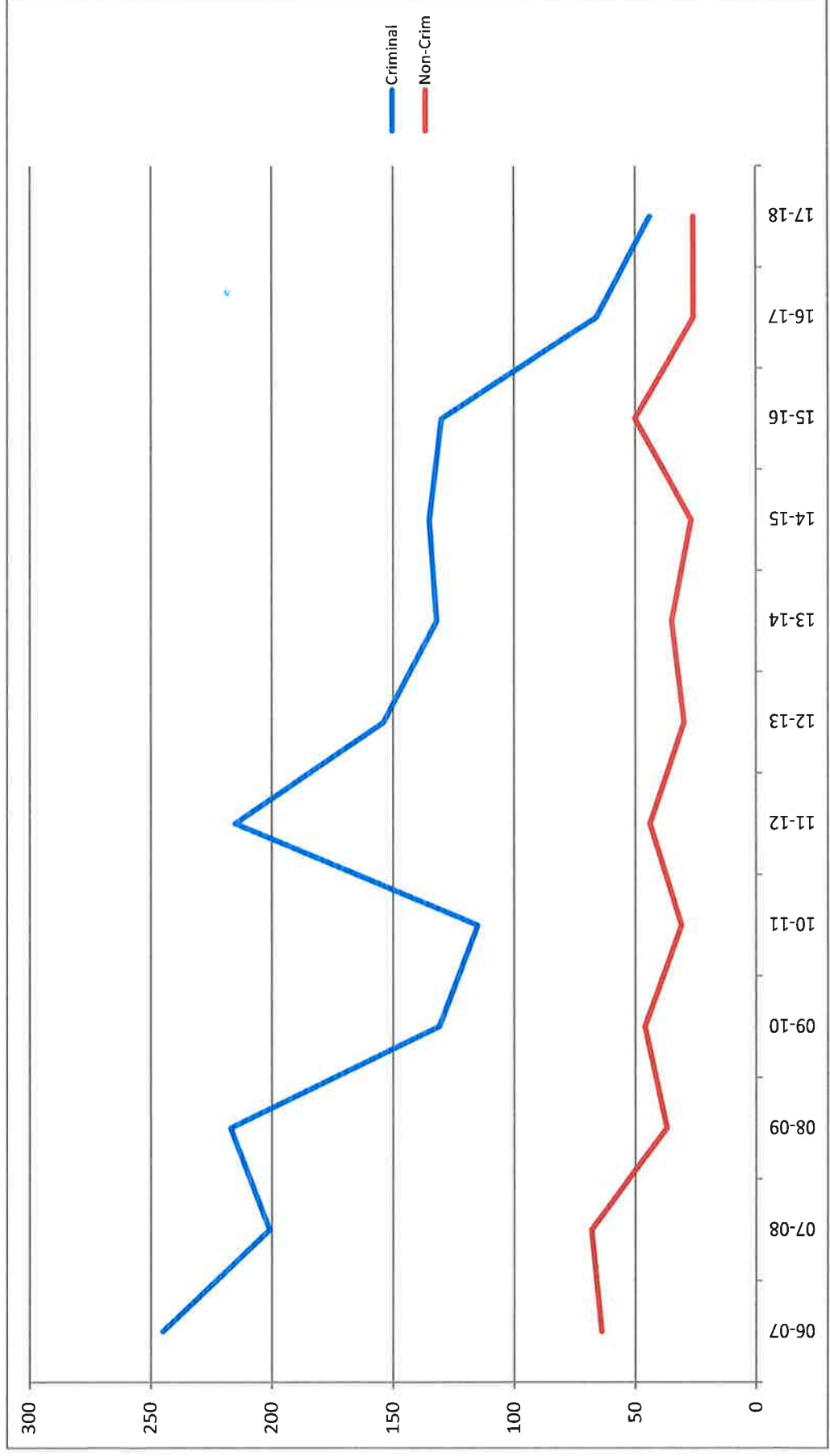
# Central Point Police Department - Referrals

	06-07	07-08	08-09	09-10	10-11	11-12	12-13	13-14	14-15	15-16	16-17	17-18
<b>Criminal</b>	270	160	160	281	227	145	165	77	74	96	64	106
<b>Non-Criminal</b>	100	132	92	76	107	69	49	29	44	82	39	62



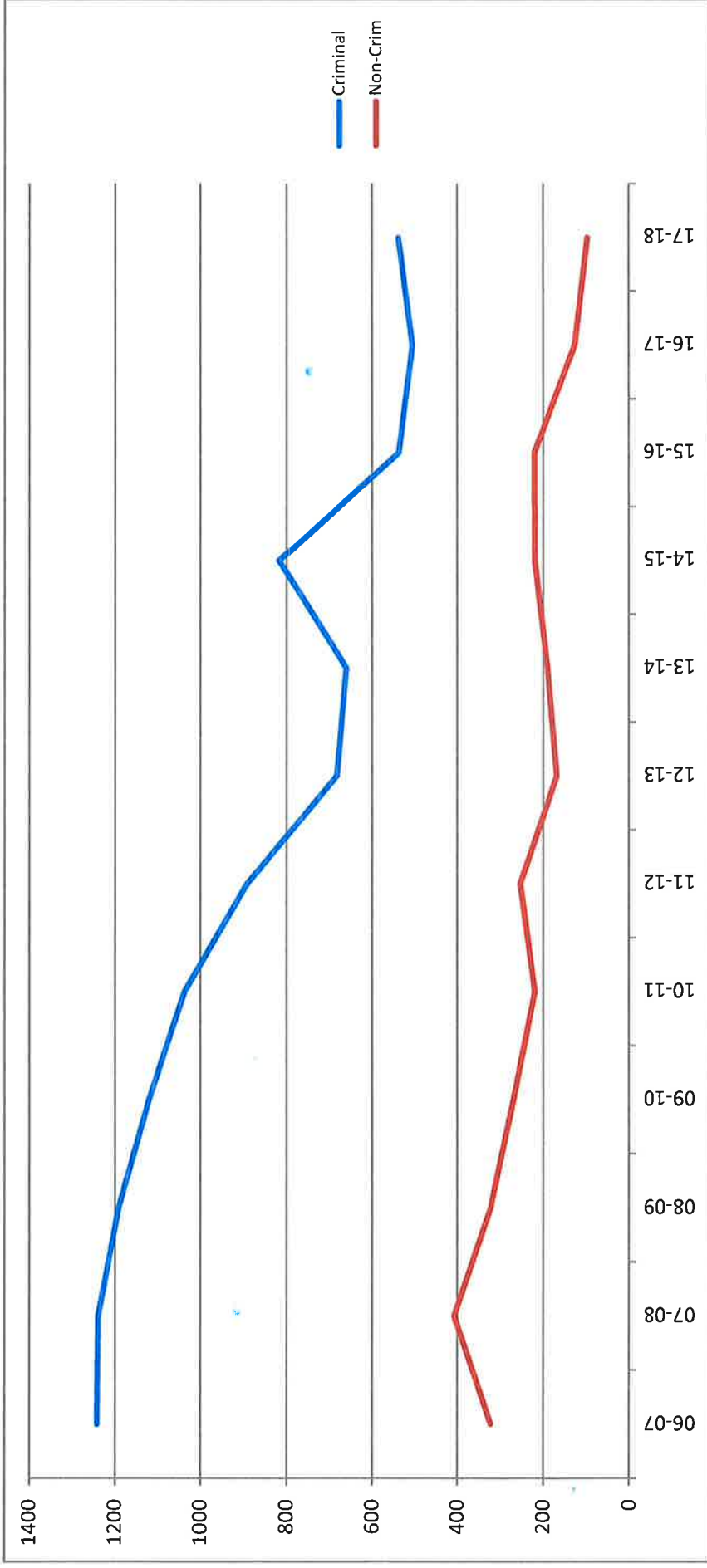
# Eagle Point Police Department - Referrals

	06-07	07-08	08-09	09-10	10-11	11-12	12-13	13-14	14-15	16-17	17-18
Criminal	245	201	217	131	115	215	154	132	135	66	44
Non-Criminal	64	68	37	46	31	44	30	35	27	26	26



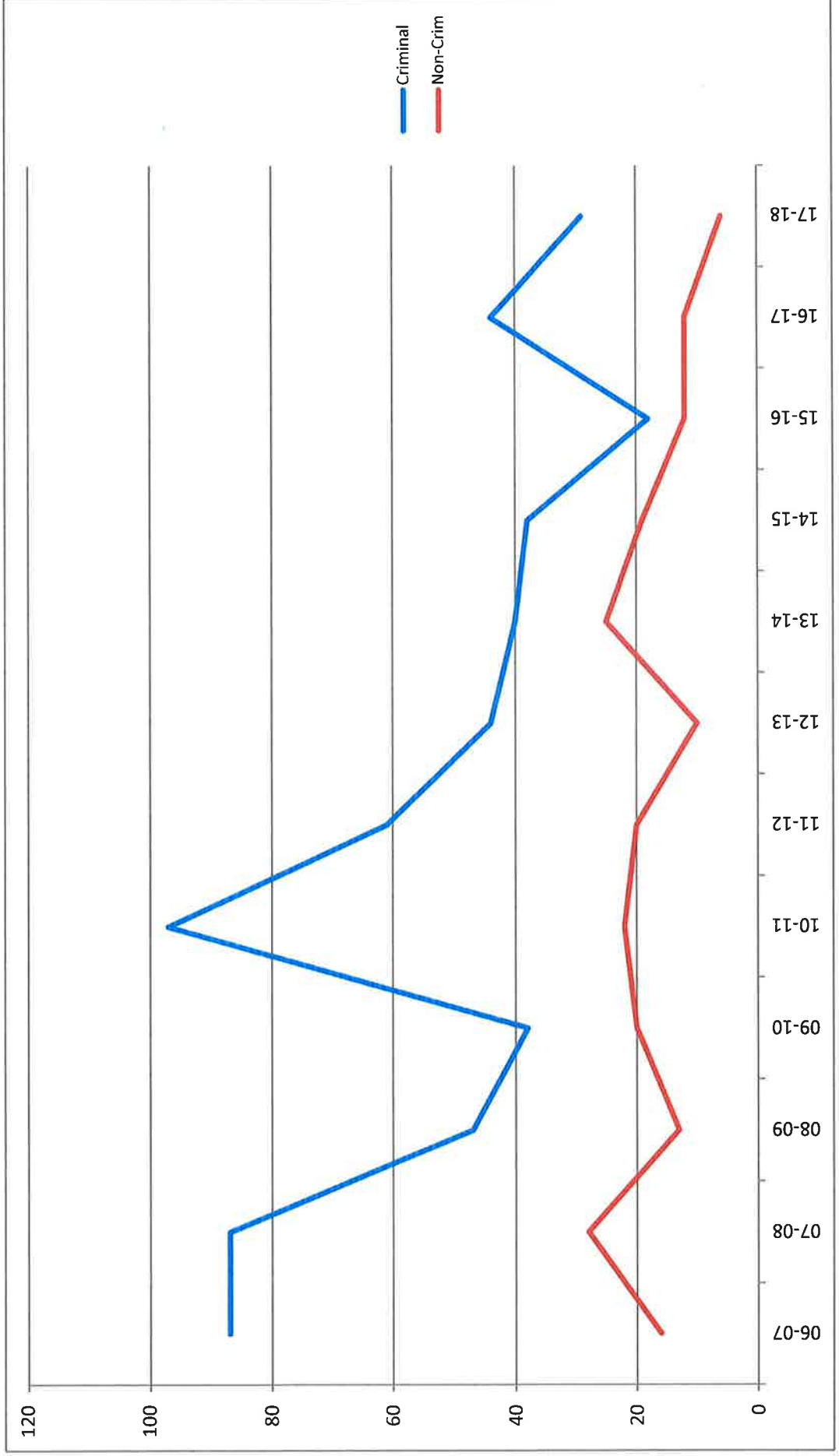
# Medford Police Department - Referrals

	06-07	07-08	08-09	09-10	10-11	11-12	12-13	13-14	14-15	15-16	16-17	17-18
Criminal	1243	1240	1191	1121	1036	891	683	661	817	539	505	539
Non-Criminal	322	408	321	268	219	253	168	190	219	220	127	97



# Phoenix Police Department - Referrals

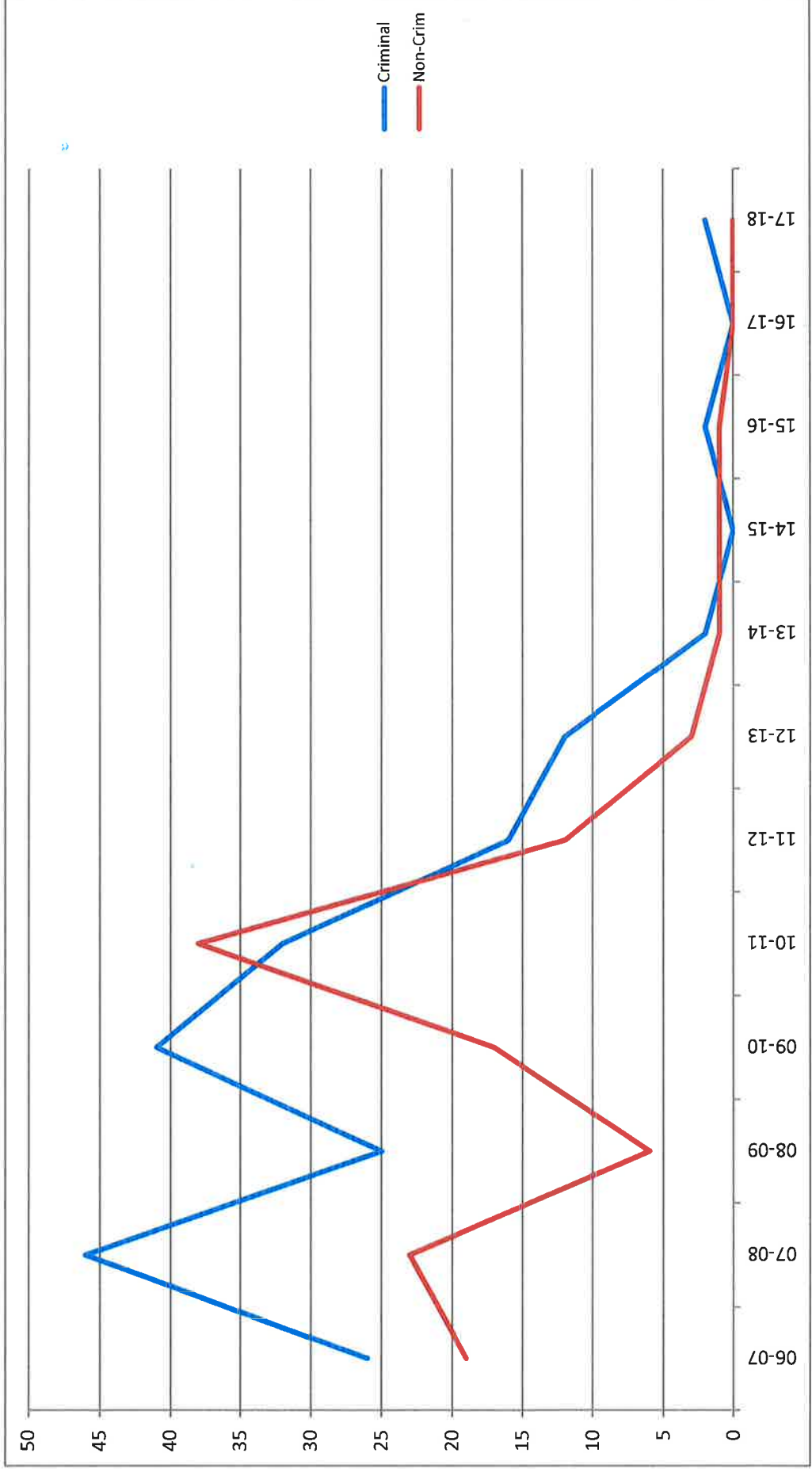
	06-07	07-08	08-09	09-10	10-11	11-12	12-13	13-14	14-15	15-16	16-17	17-18
Criminal	87	87	47	38	97	61	44	40	38	18	44	29
Non-Criminal	16	28	13	20	22	20	10	25	19	12	12	6





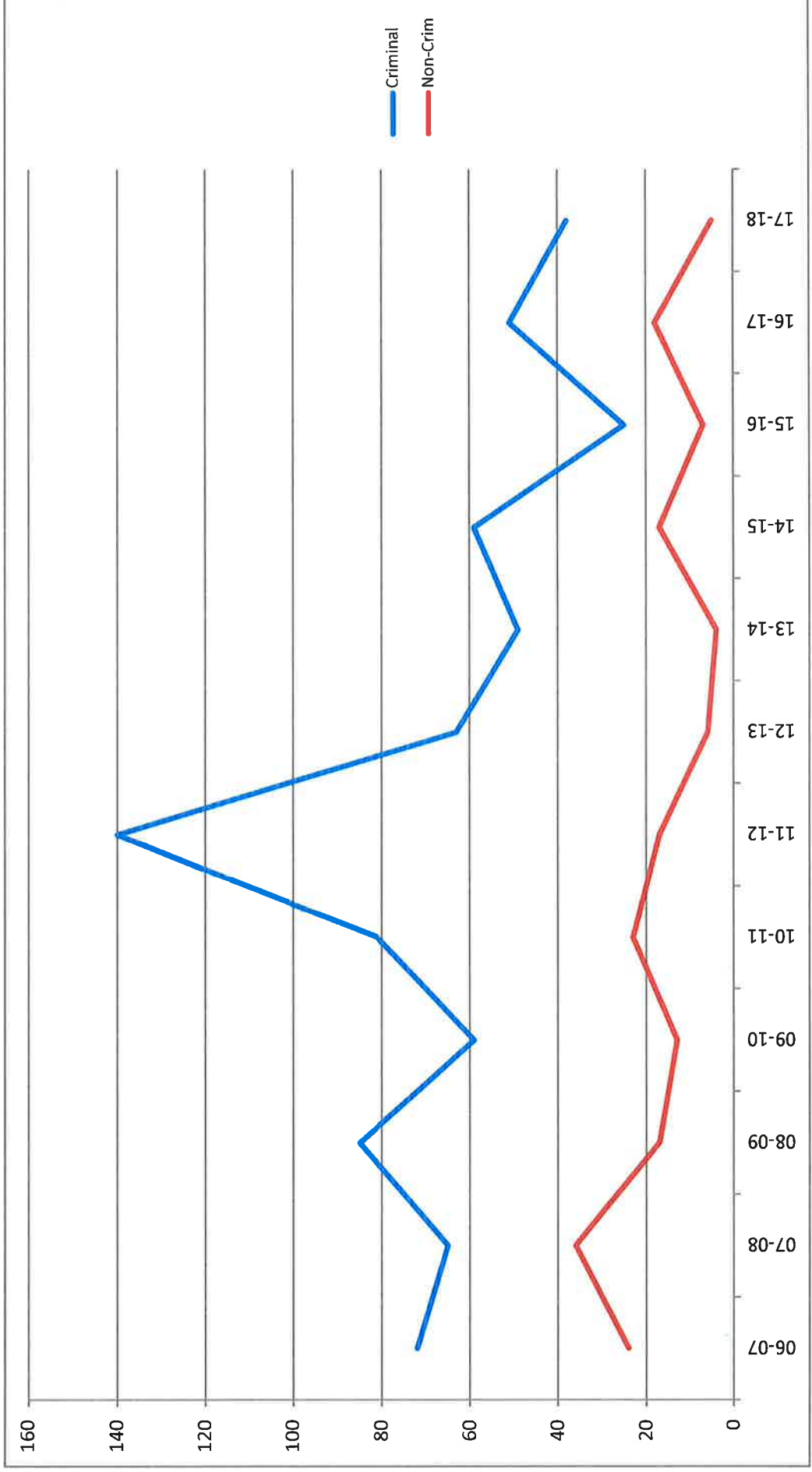
# Rogue River Police Department - Referrals

	06-07	07-08	08-09	09-10	10-11	11-12	12-13	13-14	14-15	15-16	16-17	17-18
Criminal	26	46	25	41	32	16	12	2	0	2	0	2
Non-Criminal	19	23	6	17	38	12	3	1	1	1	0	0



# Talent Police Department - Referrals

	06-07	07-08	08-09	09-10	10-11	11-12	12-13	13-14	14-15	15-16	16-17	17-18
Criminal	72	65	85	59	81	140	63	49	59	25	51	38
Non-Criminal	24	36	17	13	23	17	6	4	17	7	18	5



# Sheriffs Office - Referrals

	06-07	07-08	08-09	09-10	10-11	11-12	12-13	13-14	14-15	15-16	16-17	17-18
Criminal	306	366	410	246	278	265	166	170	129	133	105	76
Non-Criminal	65	62	74	56	71	76	57	31	24	20	26	17

