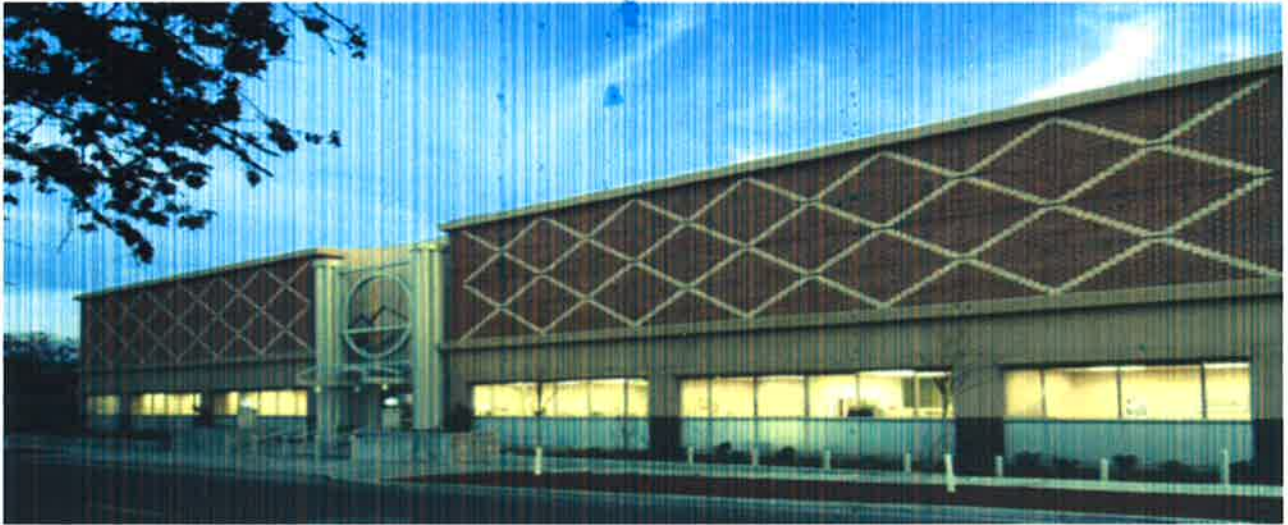




# **JACKSON COUNTY**

*Community Justice*



**Jackson County Community Justice  
Juvenile Division**

**Detention Facility  
Twelve Year Data Trend Reports**

## SUMMARY

Information on Jackson County juvenile offenders was collected, entered and maintained in the Juvenile Justice Information System (JJIS). JJIS is a state-wide electronic case management system used by all counties in the state of Oregon and maintained by the Oregon Youth Authority.

### **Items to consider when reviewing data:**

Small changes in raw numbers between years may create large percentages. For example, a change from 6 to 2 creates a change of 67%. Review both the raw numbers and percentages to determine the significant of these changes.

### **SUMMARY**

Total detention admissions decreased 16% from the previous year, with the entire decrease being male youth.

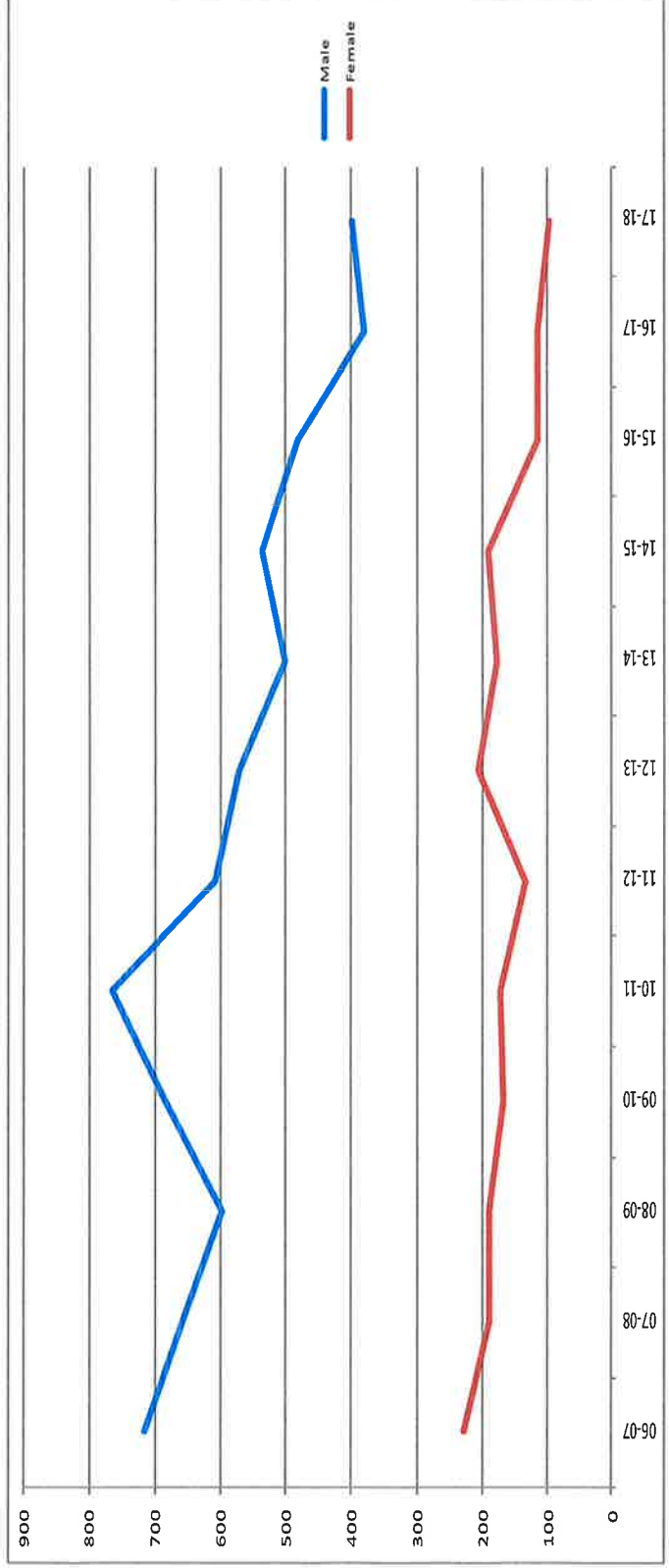
Ages 16 to 17 continue to be the highest number and percentage of youth admitted to the detention facility. 77% of admissions to the detention facility over the last twelve years are male youth, with last year being 81%. White youth (68%) followed by Hispanic youth (20%) are the largest admissions by race. Probation violations (50%) are the largest admission reason for placement in detention, followed by new law violations (25%), Warrants (14%), Court Order Sanction (7%) and Violations of Conditional Release (7%).

The average daily population in detention has averaged 22 youth over the last twelve years. Over the last 5 years this has averaged 19. The average length of stay is approximately 11 days.

Approximately 30% of youth entered detention only one time over the last 12 years. 21% of youth over the last year only entered detention one time, this would correlate with the highest admission reason being for probation violations.

**JACKSON COUNTY JUVENILE DETENTION FACILITY  
POPULATION REPORT**

Year	Number of total Youth Detained			Unduplicated # of Detained Youth			Time in Custody			Average Length of Stay			Average Daily Population		
	M	F	T	M	F	T	M	F	T	M	F	T	M	F	T
06-07	716	229	945	413	150	563	8158	1900	10058	11	8	10	22	5	27
07-08	659	189	848	386	119	505	6594	1634	8228	10	7	9	18	4	22
08-09	598	189	787	348	103	451	7102	1545	8647	12	8	10	19	4	23
09-10	685	168	854	353	95	449	9071	1470	10541	13	9	11	25	4	29
10-11	766	172	939	574	140	715	8874	1526	10116	11.1	8.9	13.1	23.5	4.2	28
11-12	609	134	744	474	105	585	7356	1275	8635	12.1	9.6	11.5	20	3	24
12-13	571	207	778	451	149	600	6676	1726	8402	11.7	8.33	10.8	18.3	4.75	23
13-14	501	178	679	412	141	553	5351	2024	6925	10.6	8.5	10.2	14.7	4.2	19
14-15	536	192	728	410	152	562	5816	1866	7682	10.1	9.7	9.9	16	5.1	21
15-16	481	116	597	385	102	487	5597	1063	6600	11.7	9.2	11.2	15.3	2.9	18
16-17	381	116	497	295	94	389	5192	1106	6298	13.8	10	12.3	13.9	3.1	17
17-18	399	96	495	316	79	395	5658	1111	6769	12.2	8	11.4	20.8	4.1	19
Averages	575	166	741	401	119	521	6787	1521	8242	12	9	11	19	4	22



## JUVENILE DIVISION - Detention Program Admission Reasons

The purpose of this section is to track youth placed in the detention program by age, race, gender, admission reason and placement agency.

JACKSON COUNTY JUVENILE DETENTION FACILITY ADMISSION REASON REPORT																														
Year	Age										Race						Custody Reason													
	<12	12	13	14	15	16	17	18	>18	WHT	BLK	ASN	HSP	IND	OTH	Law Vio		Warrant		Prob Vio		Runaway		COD		Par Vio				
											M	F	M	F	M	F	M	F	M	F	M	F	M	F	M	F	M	F		
06-07	11	30	51	112	204	265	217	47	7	696	47	20	141	18	23	178	79	109	28	253	57	46	21	3	3	75	27	No Data Available		
07-08	12	19	51	92	178	209	239	41	7	579	37	15	178	22	17	181	64	84	26	276	54	49	16	3	6	38	12	No Data Available		
08-09	1	21	71	92	150	180	210	48	14	548	30	6	182	12	9	144	52	72	26	287	71	28	16	3	2	40	14	No Data Available		
09-10	3	15	71	150	138	207	211	46	13	584	42	5	190	18	15	159	53	87	22	309	59	52	13	4	2	52	5	No Data Available		
10-11	2	14	72	157	171	225	235	48	15	629	57	5	207	24	17	161	59	87	22	403	55	48	10	3	6	35	5	No Data Available		
11-12	6	14	46	97	152	193	191	40	5	483	37	21	156	18	29	145	37	83	16	278	55	38	9	0	4	12	4	No Data Available		
12-13	1	6	43	75	146	124	139	47	7	378	25	19	129	26	11	87	40	78	13	195	64	30	17	3	2	36	10	No Data Available		
13-14	1	18	41	66	86	120	136	26	10	354	34	5	88	17	6	93	41	47	18	155	45	34	11	2	2	44	12	No Data Available		
14-15	0	17	43	89	140	191	178	47	10	485	37	5	149	15	24	165	75	67	32	155	64	56	13	1	1	59	19	40	5	
15-16	3	20	30	82	106	146	144	45	6	401	15	8	128	20	10	106	31	76	27	181	33	33	5	2	3	64	7	10	1	
16-17	5	15	34	65	122	117	123	34	7	379	19	11	94	13	6	87	24	59	27	160	35	35	13	2	5	58	6	7	3	
17-18	3	11	34	60	83	118	112	49	13	357	32	10	63	12	9	79	26	92	18	169	26	24	8	2	4	8	5	15	5	
Totals	25	151	485	933	1294	1621	1679	430	100	4598	328	95	1386	175	136	1226	438	748	221	2821	507	378	115	22	31	408	87	72	14	
															Percentage of Custody Reason		25%		14%		50%		7%		1%		7%		1%	

Information obtained from JJIS report #85

WHT: White

Law Vio: Law Violation

VCR: Violation of Conditional Release

Par Vio: Parole Violation

BLK: Black

Warrant: Warrant

Runaway: Out of State Runaway

ASN: Asian

HSP: Hispanic

Prob Vio: Probation Violation

COD: Court Ordered Detention

IND: Indian

OTH: Other