



JACKSON COUNTY
Community Justice



**Jackson County Community Justice
Juvenile Division**

**Referrals by Referring Police Agencies
12 Year Data Trend Reports**

A NOTE ABOUT DATA

Information on Jackson County juvenile offenders was collected, entered and maintained in the Juvenile Justice Information System (JJIS). JJIS is a state-wide electronic case management system used by all counties in the state of Oregon and maintained by the Oregon Youth Authority.

Items to consider when reviewing data:

Small changes in raw numbers between years may create large percentages. For example, a change from 6 to 2 creates a change of 67%. Review both the raw numbers and percentages to determine the significant of these changes. Data in this report represents crimes that have a corresponding referral to the Community Justice Juvenile Division Services which is the juvenile justice provider in the county.

If a juvenile crime occurred that was not reported, or law enforcement did not create a referral regarding the crime, it is not included in this data.

SUMMARY

Analyzing referrals from specific cities within our County provides assists in determining the appropriate resources on a geographic basis. This also assists in working with local communities on efforts to deter and respond to criminal behavior by juveniles.

Purpose

The purpose of this report is to provide statistics on the number of allegations by the specified original referral county. Each allegation is counted one time.

Description

This report counts each allegation on the referral. The report is grouped by Criminal Category or Offense Type (criminal / non-criminal). The report summarizes by number of allegations.

JACKSON COUNTY COMMUNITY JUSTICE - JUVENILE DIVISION																		
Referral by Police Agency																		
YEAR	APD		CPPD		EPPD		MPD		PPD		RRPD		TPD		SO		Totals	
	Criminal	Non-Crim	Criminal	Non-Crim	Criminal	Non-Crim	Criminal	Non-Crim	Criminal	Non-Crim	Criminal	Non-Crim	Criminal	Non-Crim	Criminal	Non-Crim	Criminal	Non-Crim
2010-2011	169	97	227	107	115	31	1036	219	97	22	32	6	81	23	278	71	2035	576
2011-2012	130	101	145	69	215	44	891	253	61	20	16	12	140	17	265	76	1863	592
2012-2013	149	76	165	49	154	30	683	168	44	10	12	3	63	6	166	57	1436	399
2013-2014	61	35	77	29	132	35	661	190	40	25	2	1	49	4	170	31	1192	350
2014-2015	98	30	74	44	135	27	817	219	38	19	0	1	59	17	129	24	1350	381
2015-2016	90	27	96	82	130	50	539	220	18	12	2	1	25	7	133	20	1033	419
2016-2017	78	27	64	39	66	26	505	127	44	12	0	0	51	18	105	26	913	275
2017-2018	55	26	106	62	44	26	539	97	29	6	2	0	38	5	76	17	889	239
2018-2019	32	25	59	25	74	50	380	103	10	3	0	2	25	4	86	3	708	226
2019-2020	26	2	25	10	24	8	205	63	14	3	1	1	22	6	30	11	347	104
2020-2021	10	1	21	6	22	13	161	25	3	0	1	0	11	2	42	4	271	51
2021-2022	41	3	66	14	43	12	322	48	10	0	5	1	32	0	32	0	551	78
% of Police Rpt	7%	3%	12%	17%	7%	15%	58%	61%	1%	0%	<1%	<1%	5%	0%	6%	0%	87%	13%
% of Police Rpt	2%		4%		3%		58%		<1%		<1%		<1%		5%		87%	

Information obtained from JJS report #57

Increase from previous year

APD = Ashland Police Dept
 MPD = Medford Police Dept
 TPD = Talent Police Dept

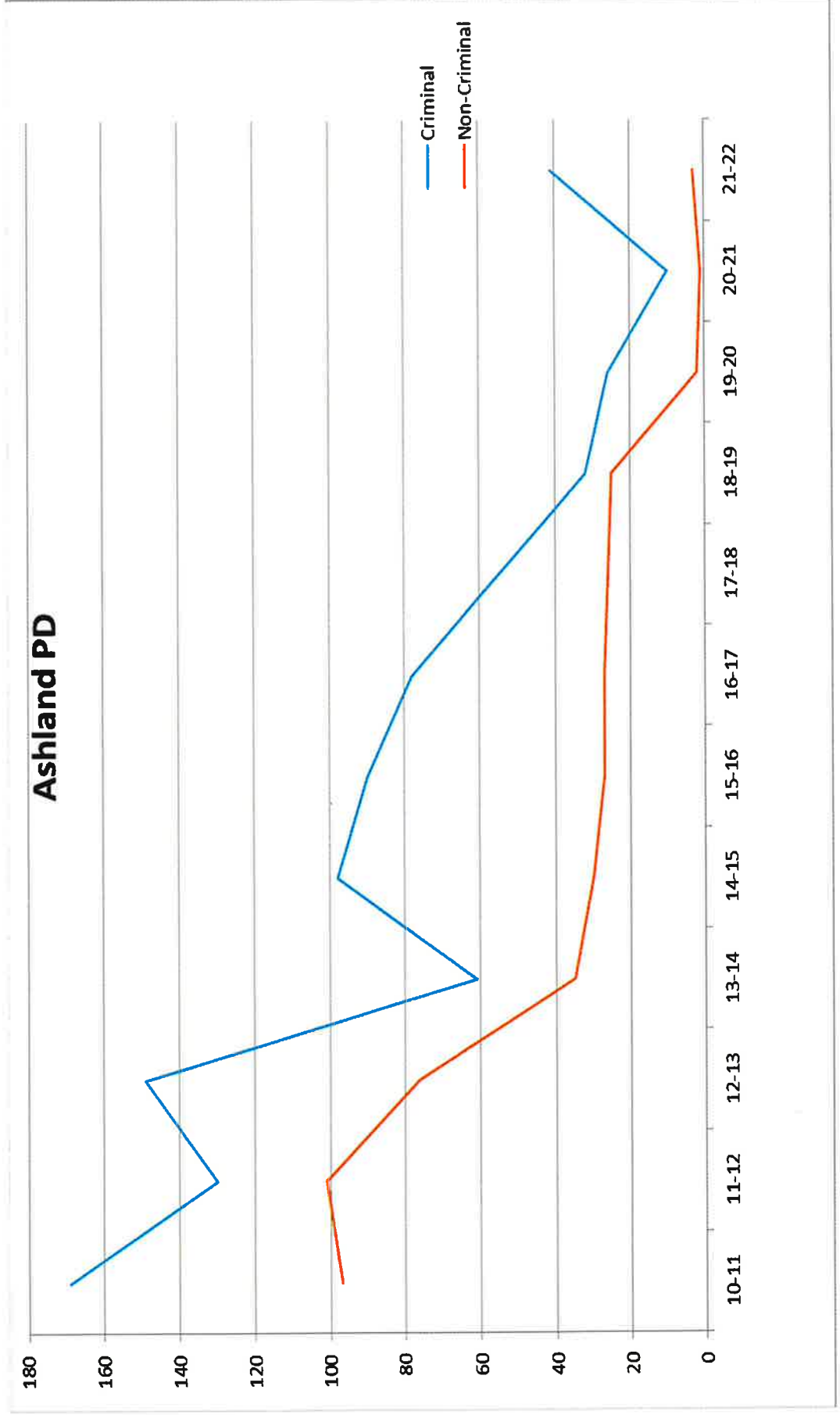
CPPD = Central Point Police Dept
 PPD = Phoenix Police Dept
 SO = Sheriff's Dept

EEPD = Eagle Point Police Dept
 RRPD = Rogue River Police Dept

Non-Criminal: Minor in Possession of alcohol, Less than one ounce of marijuana, curfew, tobacco, no bicycle or skateboard helmet (does not include dependency such as runaway or beyond parental control)

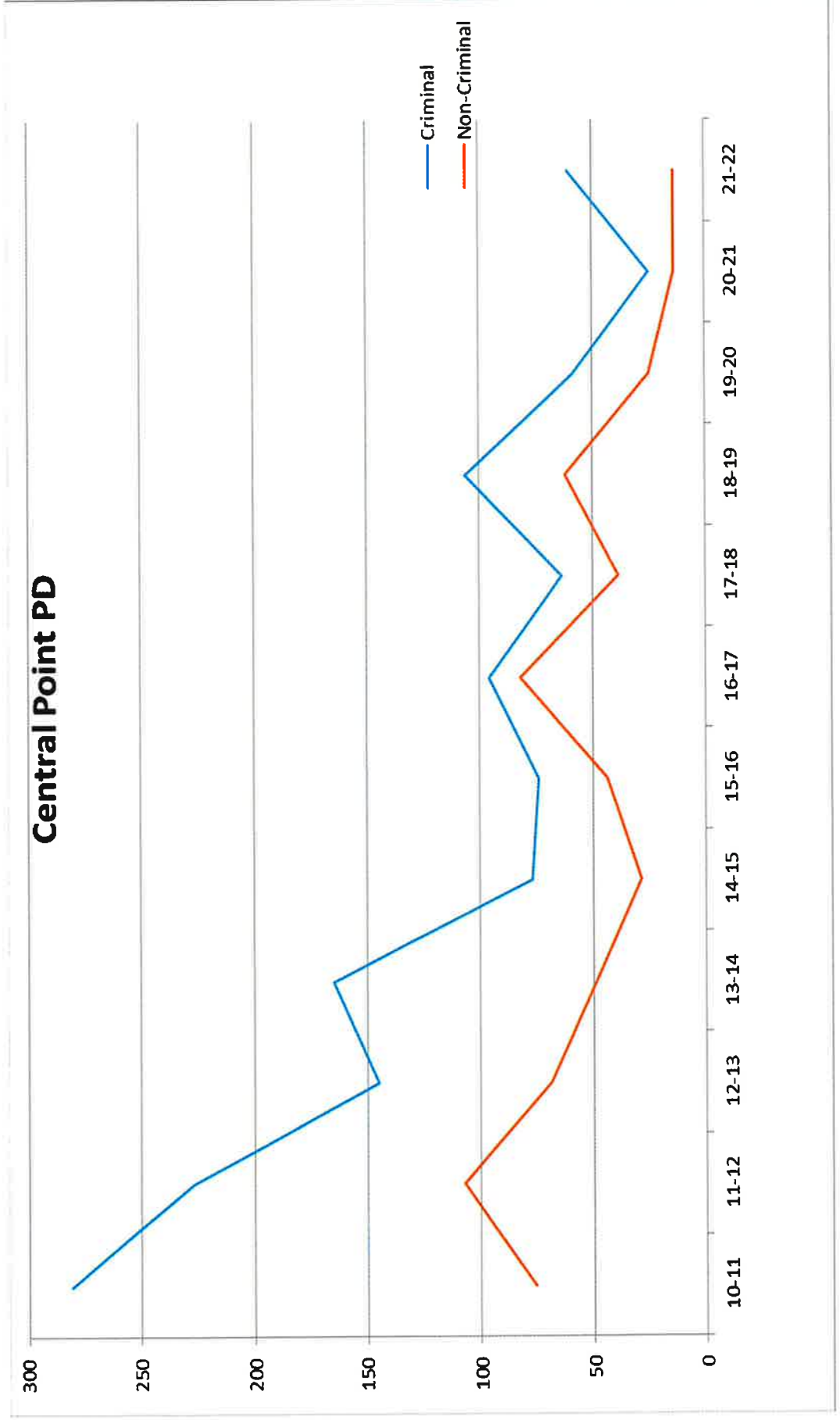
Ashland Police Department - Referrals

	10-11	11-12	12-13	13-14	14-15	15-16	16-17	17-18	18-19	19-20	20-21	21-22
Criminal	169	130	149	61	98	90	78	55	32	26	10	41
Non-Criminal	97	101	76	35	30	27	27	26	25	2	1	3



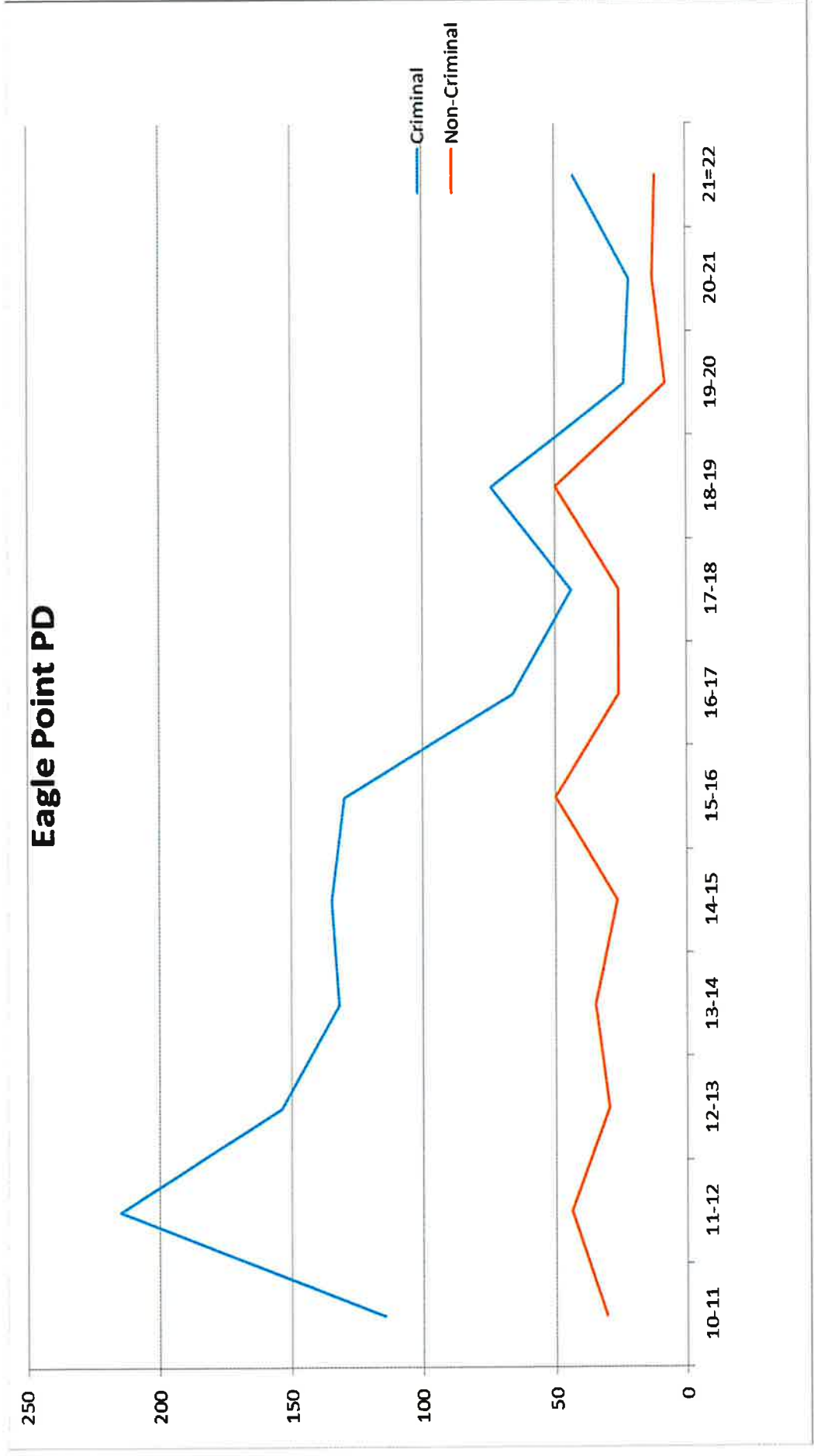
Central Point Police Department - Referrals

	10-11	11-12	12-13	13-14	14-15	15-16	16-17	17-18	18-19	19-20	20-21	21-22
Criminal	227	145	165	77	74	96	64	106	59	25	21	66
Non-Criminal	107	69	49	29	44	82	39	62	25	14	6	14



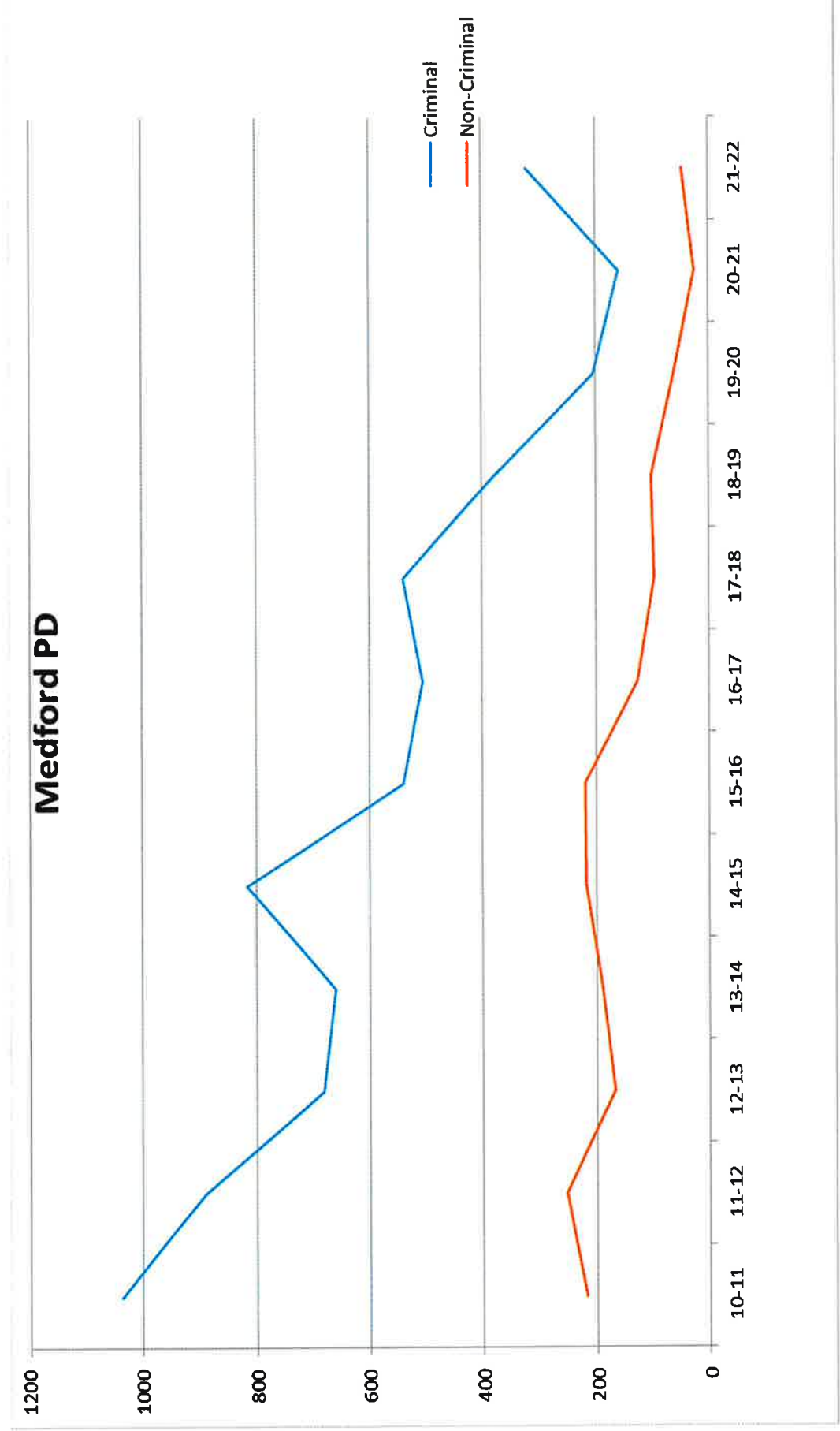
Eagle Point Police Department - Referrals

	10-11	11-12	12-13	13-14	14-15	15-16	16-17	17-18	18-19	19-20	20-21	21-22
Criminal	115	215	154	132	135	130	66	44	74	24	22	43
Non-Criminal	31	44	30	35	27	50	26	26	50	8	13	12



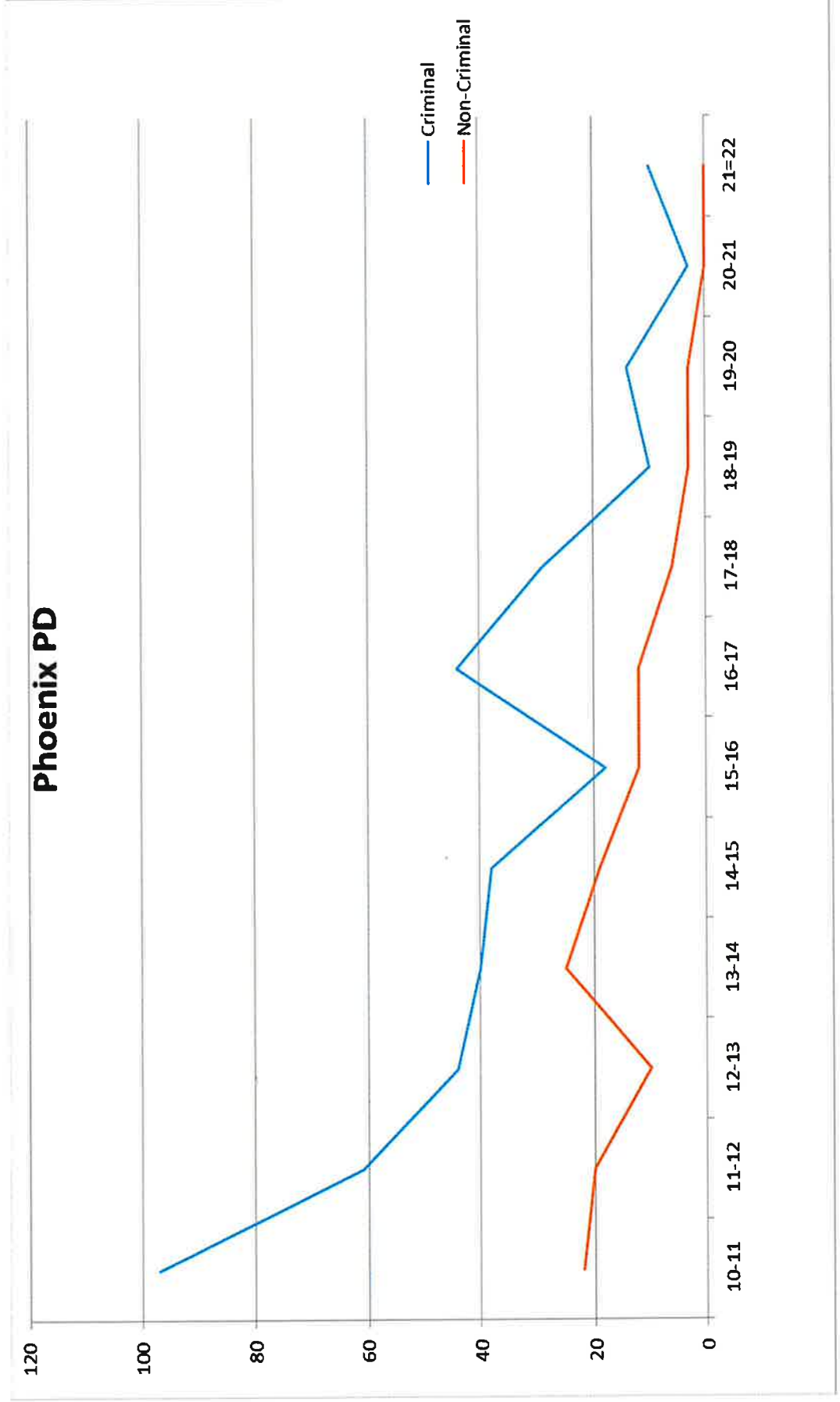
Medford Police Department - Referrals

	10-11	11-12	12-13	13-14	14-15	15-16	16-17	17-18	18-19	19-20	20-21	21-22
Criminal	891	683	661	817	539	505	539	539	380	205	161	322
Non-Criminal	253	168	190	219	220	127	97	97	103	63	25	48



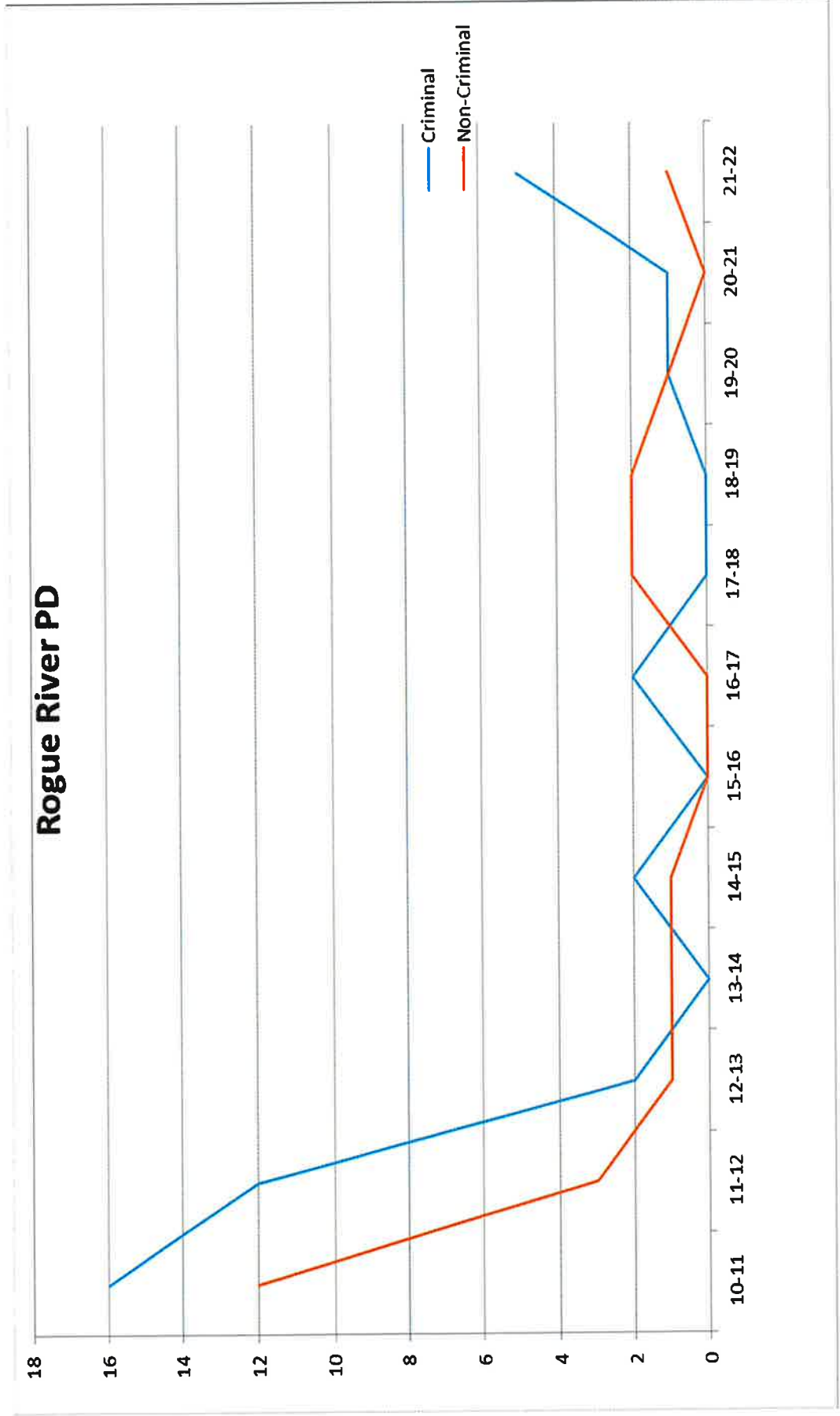
Phoenix Police Department - Referrals

	10-11	11-12	12-13	13-14	14-15	15-16	16-17	17-18	18-19	19-20	20-21	21-22
Criminal	97	61	44	40	38	18	44	29	10	14	3	10
Non-Criminal	22	20	10	25	19	12	12	6	3	3	0	0



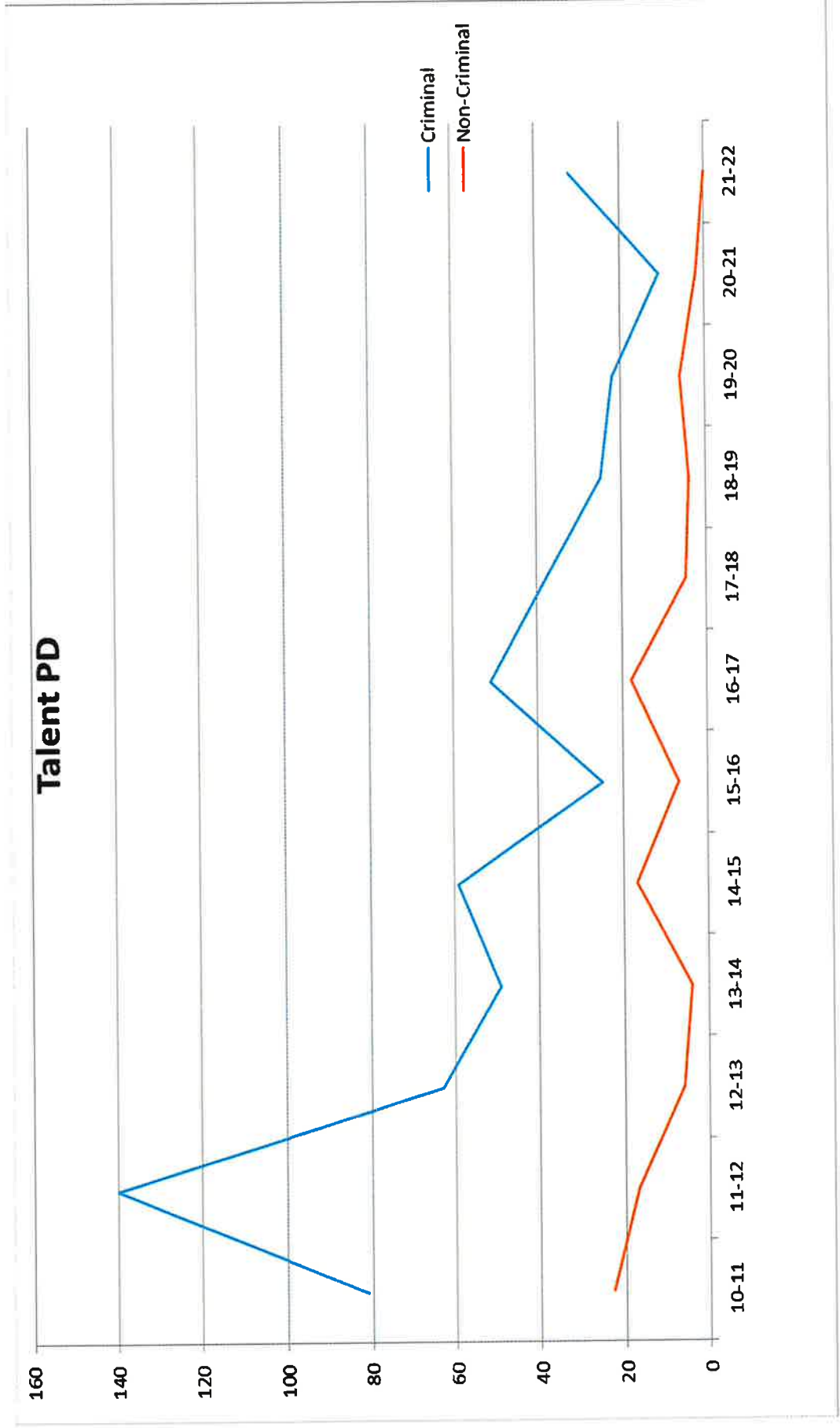
Rogue River Police Department - Referrals

	10-11	11-12	12-13	13-14	14-15	15-16	16-17	17-18	18-19	19-20	20-21	21-22
Criminal	16	12	2	0	2	0	2	0	0	1	1	5
Non-Criminal	12	3	1	1	1	0	0	2	2	1	0	1



Talent Police Department - Referrals

	10-11	11-12	12-13	13-14	14-15	15-16	16-17	17-18	18-19	19-20	20-21	21-22
Criminal	81	140	63	49	59	25	51	38	25	22	11	32
Non-Criminal	23	17	6	4	17	7	18	5	4	6	2	0



Sheriffs Office - Referrals

	10-11	11-12	12-13	13-14	14-15	15-16	16-17	17-18	18-19	19-20	20-21	21-22
Criminal	278	265	166	170	129	133	105	76	86	30	42	32
Non-Criminal	71	76	57	31	24	20	26	17	3	11	4	0

