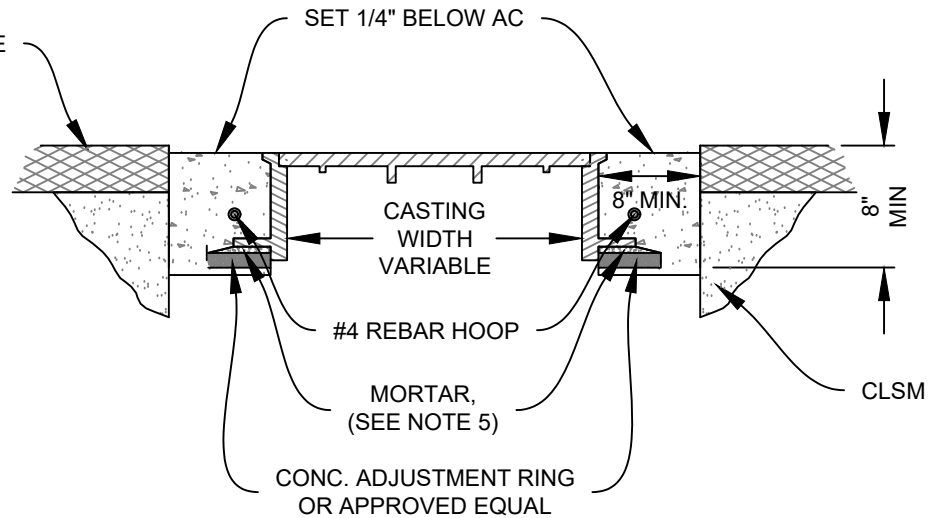
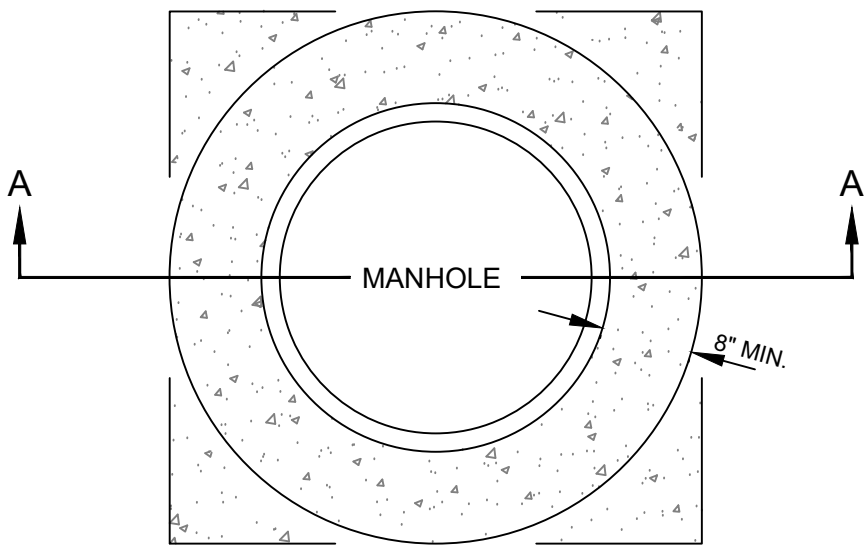




NEW STREET SURFACE



SECTION A-A



PLAN

NOTES:

1. MAY BE CIRCULAR OR SQUARE. JOINT TO BE SMOOTH AND UNIFORM CLASS 3300-3/4" CONCRETE, 4-6% ENTRAINED AIR.
2. ALL REINFORCING STEEL SHALL BE ASTM A615.
3. SET CONCRETE 1/4" LOW FROM A.C. FINISH GRADE.
4. PLACE CLSM BACKFILL IN EXCAVATION AREAS AS DIRECTED.
5. MORTAR TO BE 2" THICK MAX. USE EPOXY FOR SYNTHETIC GRADE RINGS.

JACKSON COUNTY ROADS

JAMES PHILP, P.E.
COUNTY ENGINEER

Date	By	Revision

JCRD303:
MANHOLE FRAME ADJUST

H:\Engineering\LIBRARY\COUNTY\STD_DWG\CURRENT\RD300-Drainage\RDJC303-ManholeAdjust.dwg

MAR. 2023 NO SCALE

