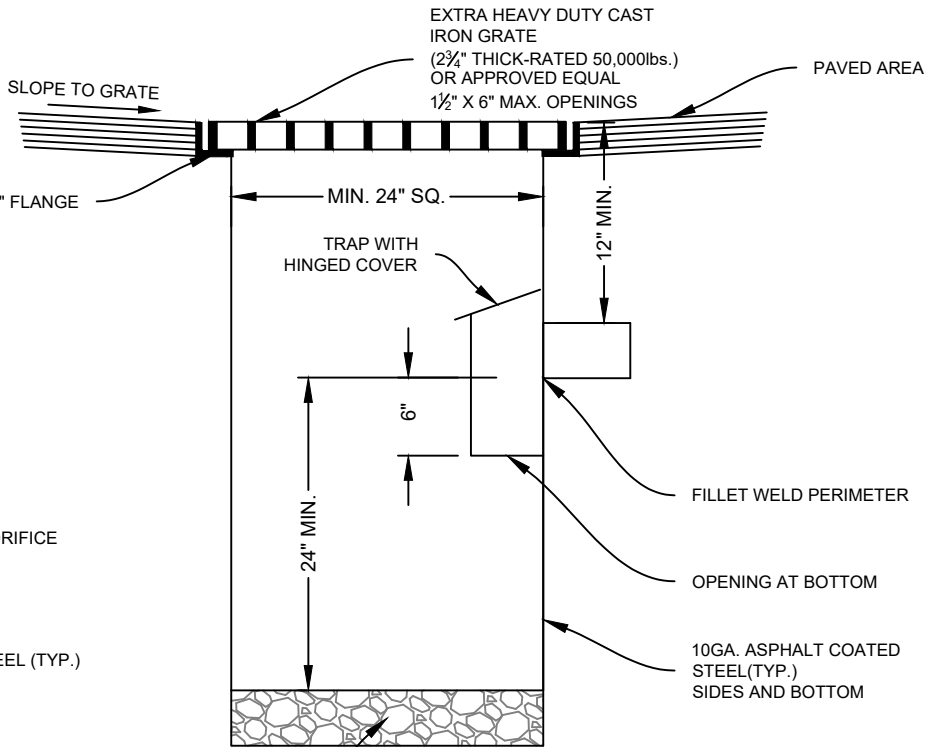


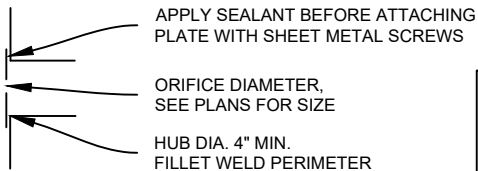
**AREA DRAIN WITH ORIFICE  
PLATE DETAIL**



**AREA DRAIN WITHOUT  
ORIFICE PLATE DETAIL**

4" MIN. 1"-0 CRUSHED  
ROCK, WELL COMPACTED

4" MIN. 1"-0 CRUSHED ROCK,  
WELL COMPACTED



**ALTERNATIVE ORIFICE  
PLATE ATTACHMENT**



**NOTES:**

1. ALTERNATIVE MATERIALS AND DESIGNS WILL BE CONSIDERED, COUNTY ENGINEER APPROVAL IS REQUIRED.
2. A CLEAN OUT TO BE INSTALLED WITHIN 5 FEET OF THE ORIFICE PLATE IF THE PLATE IS NOT REMOVABLE.
3. 12" SQUARE BASINS MAY BE APPROVED IN LOW-FLOW NON-TRAFFIC AREAS.

JACKSON COUNTY ROADS

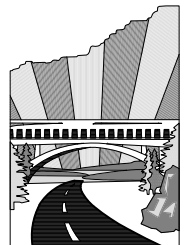
JAMES PHILP, P.E.  
COUNTY ENGINEER

Date	By	Revision

JCRD304:  
AREA DRAIN (STEEL)

I:\Engineering\LIBRARY\COUNTY\STD\_DWG\CURRENT\RD300-Drainage\JCRD304-InletArea.dwg

MAR. 2023 NO SCALE



JACKSON  
COUNTY  
Roads