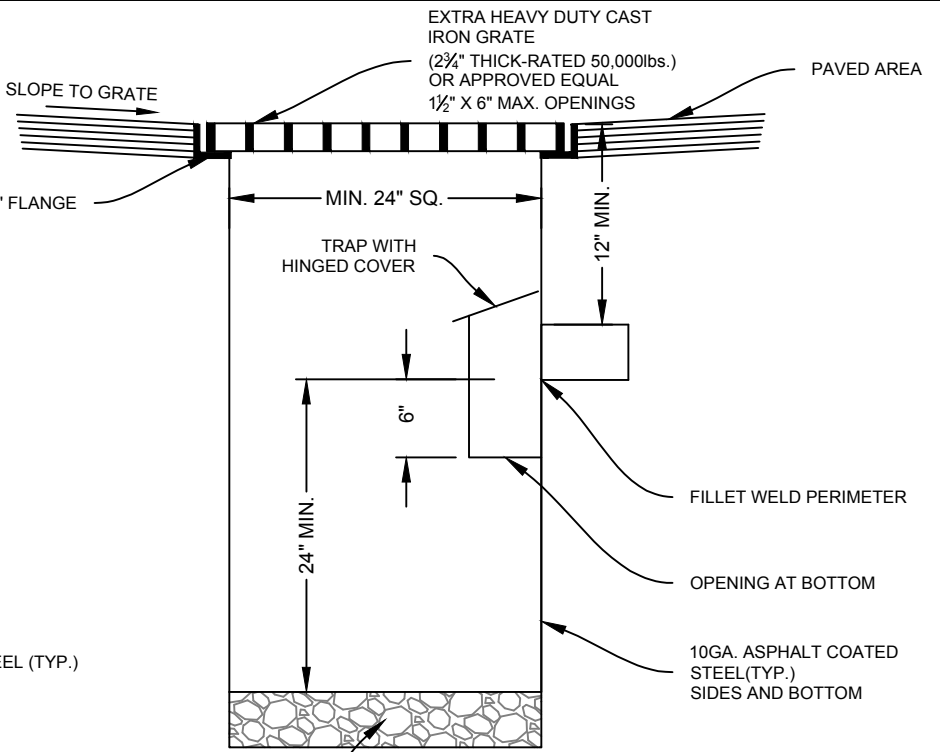


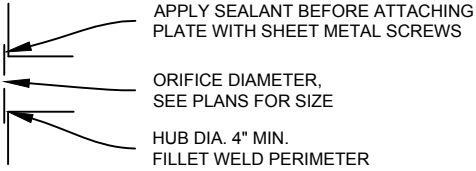
**AREA DRAIN WITH ORIFICE  
PLATE DETAIL**

4" MIN. 1"-0 CRUSHED  
ROCK, WELL COMPACTED



**AREA DRAIN WITHOUT  
ORIFICE PLATE DETAIL**

4" MIN. 1"-0 CRUSHED  
ROCK, WELL COMPACTED



**ALTERNATIVE ORIFICE  
PLATE ATTACHMENT**

- NOTES:**
1. ALTERNATIVE MATERIALS AND DESIGNS WILL BE CONSIDERED, COUNTY ENGINEER APPROVAL IS REQUIRED.
  2. UBC REQUIRES A CLEAN OUT TO BE INSTALLED WITHIN 5 FEET OF THE ORIFICE PLATE IF THE PLATE IS NOT REMOVEABLE.
  3. 12" SQUARE BASINS MAY BE APPROVED IN LOW-FLOW NON-TRAFFIC AREAS.

JACKSON COUNTY ROADS

---

MIKE KUNTZ, P.E.  
COUNTY ENGINEER

Date	By	Revision

JCRD304:  
AREA DRAIN (STEEL)

---

\\Engineering\LIBRARY\COUNTY\STD\_DWG\CURRENT\RD300-Drainage\JCRD304-InletArea.dwg

---

OCT 2017

---

NO SCALE

