

REFERENCE THE FOLLOWING ODOT STANDARD DRAWINGS FOR CURBS, ISLANDS, SIDEWALKS, AND DRIVEWAYS

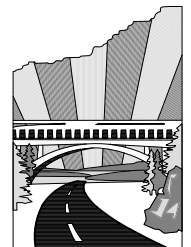
- RD700 CURBS
- RD701 DRAINAGE CURBS
- RD705 ISLANDS
- RD706 TRAFFIC SEPARATORS AND TRANSITIONS
- RD707 ISLAND NOSE TREATMENTS
- RD710 ACCESSIBLE ROUTE ISLANDS
- RD720 SIDEWALKS
- RD754 SIDEWALK RAMP AND TURNING SPACE (FOR ENDS OF SIDEWALKS)
- RD755 SIDEWALK RAMP DETAILS
- RD756 SIDEWALK RAMP PLACEMENT OPTIONS SMALL RADII
- RD757 SIDEWALK RAMP PLACEMENT OPTIONS LARGE RADII
- RD759 TRUNCATED DOME DETECTABLE WARNING SURFACE DETAILS & LOCATIONS

<http://www.oregon.gov/ODOT/Engineering/Pages/Drawings-Roadway.aspx>

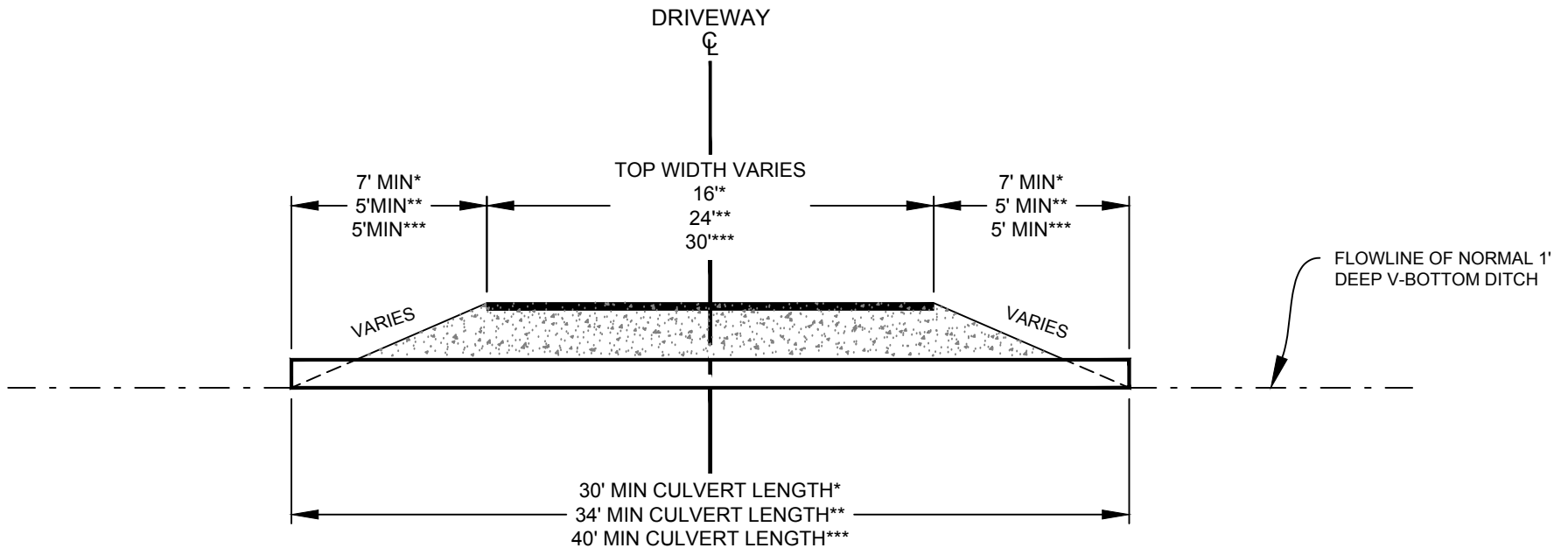
JACKSON COUNTY ROADS
MIKE KUNTZ, P.E. COUNTY ENGINEER

Date	By	Revision

JCRD700: ODOT DRAWINGS ROADWAY 700 - CURBS, ISLANDS, SIDEWALKS, AND DRIVEWAYS	
<small>\\Engineering\LIBRARY\COUNTY\STD_DWG\2017\RD700-CurbSidewalkDriveway\JCRD700-ODOT.dwg</small>	
OCT 2017	NO SCALE



**JACKSON  
COUNTY**  
*Roads*



**TYPICAL  
DRIVEWAY CULVERT**

- \* RESIDENTIAL DRIVEWAY
- \*\* COMMERCIAL DRIVEWAY (26,000 LBS OR LESS TRUCKS)
- \*\*\* COMMERCIAL DRIVEWAY (26,001 LBS OR MORE TRUCKS)

**NOTE:**

1. LENGTHEN CULVERTS AS REQUIRED TO ACCOMMODATE DEEPER ROADSIDE DITCHES. CULVERTS MUST BE LONGER THAN MINIMUM LENGTH LISTED.
2. STANDARD CULVERT SIZE TO BE 12" DIAMETER. LARGER DIAMETER PIPE MAY BE REQUIRED FOR HIGHER FLOW.
3. USE 16 GAUGE CMP OR CLASS 3 CONCRETE PIPE FOR 12"-24" PIPE DIAMETERS. USE OF N-12 PLASTIC PIPE ALLOWED FOR 12"-24" PIPE DIAMETERS WITH ENGINEER OF RECORD APPROVAL, AND ADEQUATE COVER PER PIPE MANUFACTURER. PIPE DIAMETERS OVER 24" MUST BE REVIEWED AND APPROVED BY COUNTY ENGINEER.

JACKSON COUNTY ROADS

---

MIKE KUNTZ, P.E.  
COUNTY ENGINEER

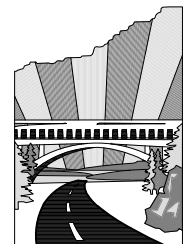
Date	By	Revision

JCRD701:  
DRIVEWAY CULVERT

\\Engineering\LIBRARY\COUNTY\STD\_DWG\CURRENT\RD700-CurbSidewalkDriveway\JCRD701-DrivewayCulvert.dwg

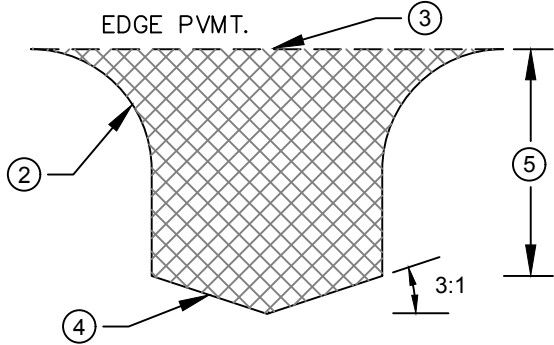
OCT 2017

NO SCALE



**JACKSON  
COUNTY**  
*Roads*

# PAVED ROAD APPROACH DETAIL

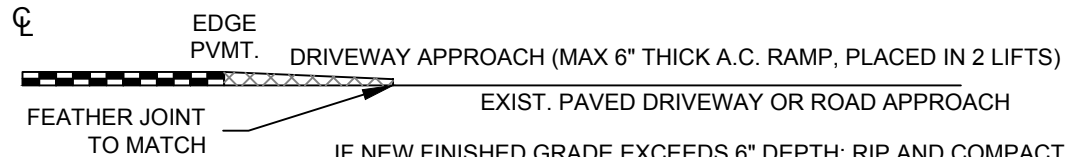
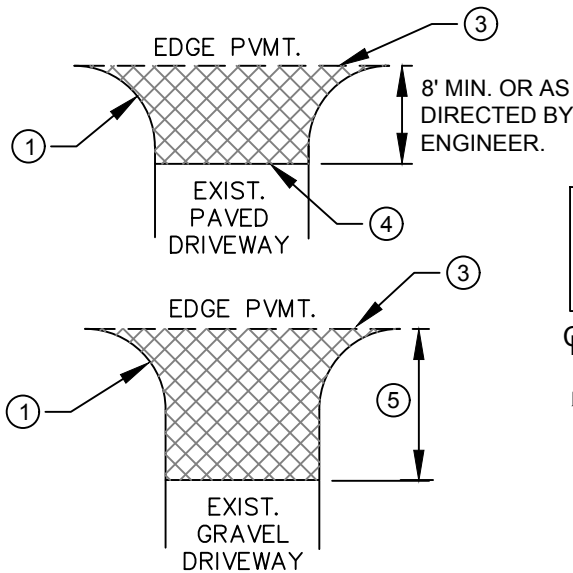


## NOTES:

- ① RADII SHALL MATCH EXISTING, OR AS DIRECTED BY ENGINEER. 8' MIN. ON DRIVEWAYS.
- ② AS DIRECTED BY ENGINEER OR SHOWN ON PLANS.
- ③ TACK EDGES OF EXISTING PAVEMENT OR CONCRETE. SAND SEAL EDGE OF PAVEMENT JOINT AS DIRECTED BY ENGINEER.
- ④ TACK EXISTING PAVEMENT. SAND SEAL BUTT JOINT/ FEATHER JOINT AS DIRECTED BY ENGINEER.
- ⑤ MIN. 15' OR AS DIRECTED.

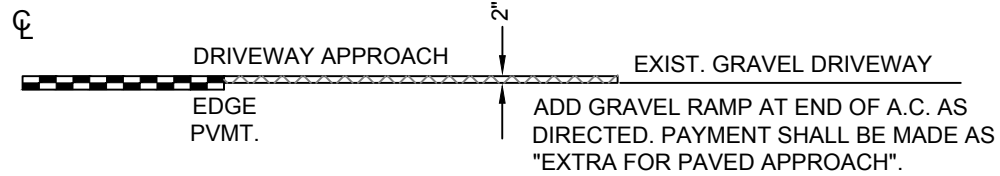
# NEW PAVED DRIVEWAY APPROACH DETAILS

## TYPICAL PROFILE VIEW



**DRIVEWAYS**  
 MAX 10% GRADE WITHIN R/W  
 MAX 15% GRADE OUTSIDE R/W  
 MAX 5% GRADE DIFFERENCE

IF NEW FINISHED GRADE EXCEEDS 6" DEPTH: RIP AND COMPACT EXISTING DRIVEWAY PAVEMENT, PLACE AND COMPACT BASE ROCK TO 2" BELOW FINISHED GRADE AND PAVE APPROACH (AS DIRECTED BY ENGINEER). PAYMENT SHALL BE MADE FOR "RECONSTRUCT PAVED APPROACH".



JACKSON COUNTY ROADS

---

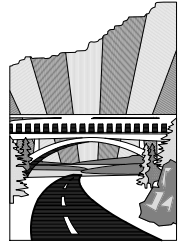
MIKE KUNTZ, P.E.  
 COUNTY ENGINEER

Date	By	Revision

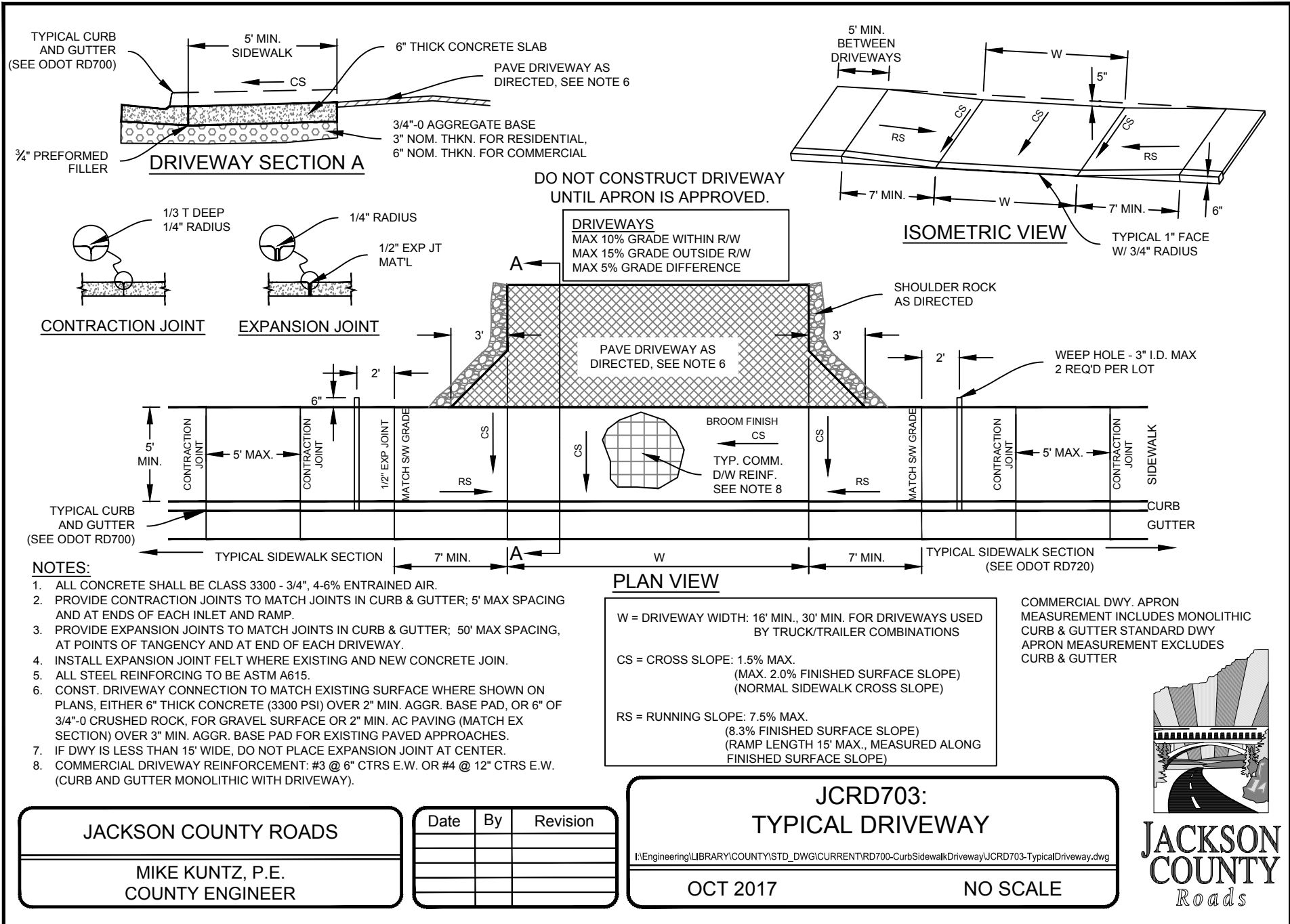
**JCRD702:**  
**ROAD AND DRIVEWAY APPROACHES**

I:\Engineering\LIBRARY\COUNTY\STD\_DWG\CURRENT\RD700-CurbSidewalkDriveway\JCRD702-DwyRdApp.dwg

OCT 2017 NO SCALE



**JACKSON COUNTY**  
*Roads*



JACKSON COUNTY ROADS

---

MIKE KUNTZ, P.E.  
COUNTY ENGINEER

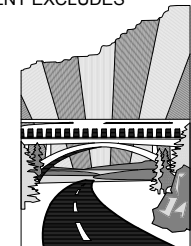
Date	By	Revision

**JCRD703:**  
**TYPICAL DRIVEWAY**

\\Engineering\LIBRARY\COUNTY\STD\_DWG\CURRENT\RD700-CurbSidewalkDriveway\JCRD703-TypicalDriveway.dwg

OCT 2017

NO SCALE



**JACKSON COUNTY**  
Roads