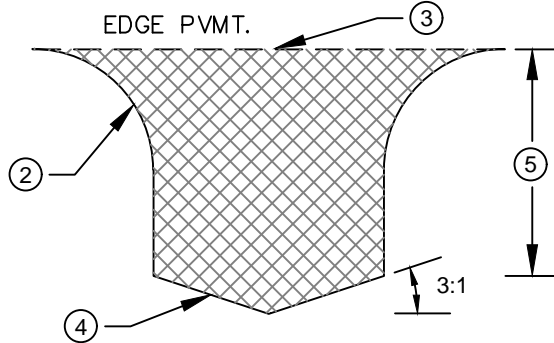


PAVED ROAD APPROACH DETAIL

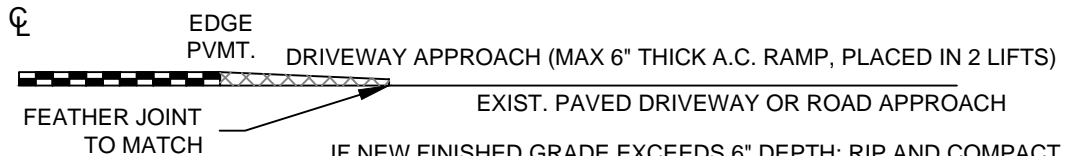
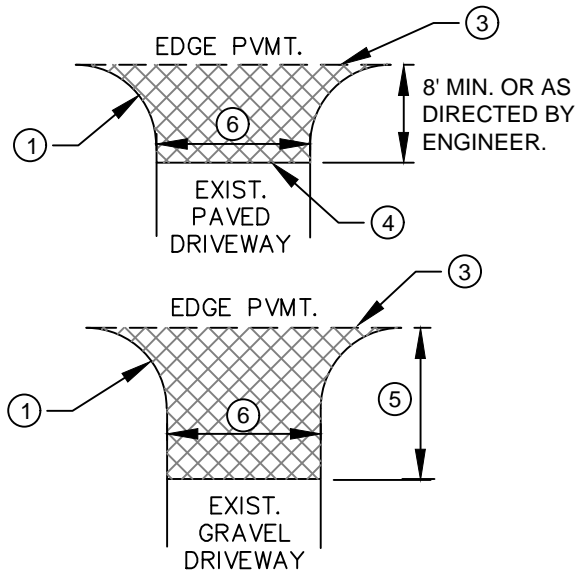


NOTES:

- ① RADII SHALL MATCH EXISTING, OR AS DIRECTED BY ENGINEER. 8' MIN. ON DRIVEWAYS.
- ② AS DIRECTED BY ENGINEER OR SHOWN ON PLANS.
- ③ TACK EDGES OF EXISTING PAVEMENT OR CONCRETE. SAND SEAL EDGE OF PAVEMENT JOINT AS DIRECTED BY ENGINEER.
- ④ TACK EXISTING PAVEMENT. SAND SEAL BUTT JOINT/ FEATHER JOINT AS DIRECTED BY ENGINEER.
- ⑤ DRIVEWAY/ROAD APPROACHES ON COLLECTOR AND ARTERIAL COUNTY ROADS AND ALL COMMERCIAL DRIVEWAY/ROAD APPROACHES REGARDLESS OF ROAD CLASSIFICATION SHALL BE PAVED 15 FEET OR TO THE RIGHT-OF-WAY, WHICHEVER IS GREATER, EXCEPTING THOSE APPROACHES THAT ABUT UNPAVED COUNTY ROADS.
- ⑥ SEE JCRD701 FOR MINIMUM TOP WIDTH.

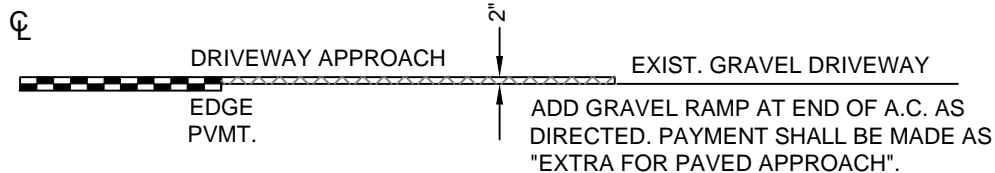
NEW PAVED DRIVEWAY APPROACH DETAILS

TYPICAL PROFILE VIEW



DRIVEWAYS
 MAX 10% GRADE WITHIN R/W
 MAX 15% GRADE OUTSIDE R/W
 MAX 5% GRADE DIFFERENCE

IF NEW FINISHED GRADE EXCEEDS 6" DEPTH: RIP AND COMPACT EXISTING DRIVEWAY PAVEMENT, PLACE AND COMPACT BASE ROCK TO 2" BELOW FINISHED GRADE AND PAVE APPROACH (AS DIRECTED BY ENGINEER). PAYMENT SHALL BE MADE FOR "RECONSTRUCT PAVED APPROACH".



JACKSON COUNTY ROADS

MIKE KUNTZ, P.E.
 COUNTY ENGINEER

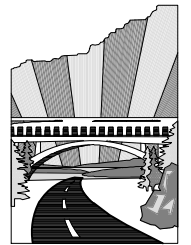
Date	By	Revision

JCRD702:
ROAD AND DRIVEWAY APPROACHES

I:\Engineering\LIBRARY\COUNTY\STD_DWG\CURRENT\RD700-CurbSidewalkDriveway\JCRD702-DwyRdApp.dwg

JAN 2021

NO SCALE



JACKSON
COUNTY
Roads